

Anti-HTR1E antibody (101-150 aa) (STJ95759)

STJ95759

GENERAL INFORMATION

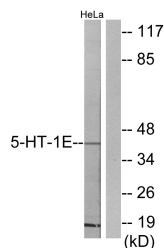
Product Type	Primary antibodies
Short Description	Rabbit polyclonal antibody anti-5-hydroxytryptamine receptor 1E (101-150 aa) is suitable for use in Immunofluorescence, ELISA and Immunohistochemistry research applications.
Applications	IF/ELISA/IHC
Host/Source	Rabbit
Reactivity	Human

PRODUCT PROPERTIES

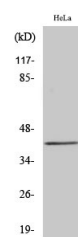
Clonality	Polyclonal
Clone ID	
Concentration	1 mg/mL
Conjugation	Unconjugated
Purification	The antibody was affinity-purified from rabbit antiserum by affinity-chromatography using epitope-specific immunogen.
Dilution Range	IF ICC 1:50-300 ELISA 1:2000-20000 IHC-P 1:50-200
Formulation	Liquid in PBS containing 50% Glycerol, 0.5% BSA and 0.02% Sodium Azide.
Isotype	IgG
Storage Instruction	Store at -20°C for up to 1 year from the date of receipt, and avoid repeat freeze-thaw cycles.

TARGET INFORMATION

Gene ID	3354
Gene Symbol	HTR1E
Uniprot ID	5HT1E_HUMAN
Immunogen	The antiserum was produced against synthesized peptide derived from the human 5-HT-1E at the amino acid range 101-150
Immunogen Region	101-150 aa
Specificity	SR-1E Polyclonal Antibody detects endogenous levels of SR-1E protein.
Immunogen Sequence	



Western blot analysis of lysates from HeLa cells, using 5-HT-1E Antibody. The lane on the right is blocked with the synthesized peptide.



Western blot analysis of various cells using SR-1E Polyclonal Antibody