

## Anti-SPHK2 antibody (580-629 aa) (STJ95748)

STJ95748

### GENERAL INFORMATION

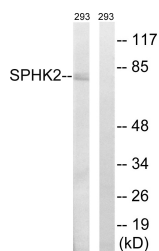
<b>Product Type</b>	Primary antibodies
<b>Short Description</b>	Rabbit polyclonal antibody anti-Sphingosine kinase 2 (580-629 aa) is suitable for use in Western Blot, Immunohistochemistry, Immunofluorescence and ELISA research applications.
<b>Applications</b>	WB/IHC/IF/ELISA
<b>Host/Source</b>	Rabbit
<b>Reactivity</b>	Human/Mouse/Rat

### PRODUCT PROPERTIES

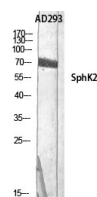
<b>Clonality</b>	Polyclonal
<b>Clone ID</b>	
<b>Concentration</b>	1 mg/mL
<b>Conjugation</b>	Unconjugated
<b>Purification</b>	The antibody was affinity-purified from rabbit antiserum by affinity-chromatography using epitope-specific immunogen.
<b>Dilution Range</b>	WB 1:500-1:2000 IHC 1:100-1:300 ELISA 1:5000 IF 1:50-200
<b>Formulation</b>	Liquid in PBS containing 50% Glycerol, 0.5% BSA and 0.02% Sodium Azide.
<b>Isotype</b>	IgG
<b>Storage Instruction</b>	Store at -20°C for up to 1 year from the date of receipt, and avoid repeat freeze-thaw cycles.

### TARGET INFORMATION

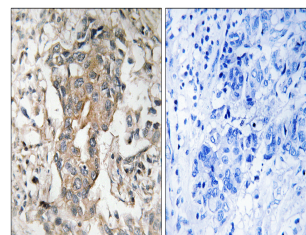
<b>Gene ID</b>	56848
<b>Gene Symbol</b>	SPHK2
<b>Uniprot ID</b>	SPHK2_HUMAN
<b>Immunogen</b>	The antiserum was produced against synthesized peptide derived from the human SPHK2 at the amino acid range 580-629
<b>Immunogen Region</b>	580-629 aa
<b>Specificity</b>	SphK2 Polyclonal Antibody detects endogenous levels of SphK2 protein.
<b>Immunogen Sequence</b>	



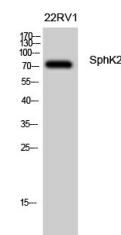
Western blot analysis of lysates from 293 cells, using SPHK2 Antibody. The lane on the right is blocked with the synthesized peptide.



Western blot analysis of AD293 using SphK2 Polyclonal Antibody diluted at 1:500



Immunohistochemistry analysis of paraffin-embedded human breast carcinoma tissue, using SPHK2 Antibody. The picture on the right is blocked with the synthesized peptide.



Western blot analysis of 22RV1 cells using SphK2 Polyclonal Antibody diluted at 1:500