

Anti-SFTPB antibody (243-292 aa) (STJ95745)

STJ95745

GENERAL INFORMATION

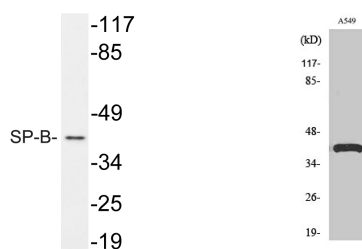
Product Type	Primary antibodies
Short Description	Rabbit polyclonal antibody anti-Pulmonary surfactant-associated protein B (243-292 aa) is suitable for use in Western Blot, ELISA and Immunohistochemistry research applications.
Applications	WB/ELISA/IHC
Host/Source	Rabbit
Reactivity	Human/Rat/Mouse

PRODUCT PROPERTIES

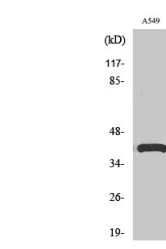
Clonality	Polyclonal
Clone ID	
Concentration	1 mg/mL
Conjugation	Unconjugated
Purification	The antibody was affinity-purified from rabbit antiserum by affinity-chromatography using epitope-specific immunogen.
Dilution Range	WB 1:500-2000 IHC-P 1:50-300 ELISA 2000-20000
Formulation	Liquid in PBS containing 50% Glycerol, 0.5% BSA and 0.02% Sodium Azide.
Isotype	IgG
Storage Instruction	Store at -20°C for up to 1 year from the date of receipt, and avoid repeat freeze-thaw cycles.

TARGET INFORMATION

Gene ID	6439
Gene Symbol	SFTPB
Uniprot ID	PSPB_HUMAN
Immunogen	The antiserum was produced against synthesized peptide derived from the human SP-B at the amino acid range 243-292
Immunogen Region	243-292 aa
Specificity	SP-B Polyclonal Antibody detects endogenous levels of SP-B protein.
Immunogen Sequence	



Western blot analysis of lysate from A549 cells, using SP-B antibody.



Western blot analysis of various cells using SP-B Polyclonal Antibody diluted at 1:1000

This product is suitable for in-vitro studies under the RESEARCH USE ONLY [RUO] licence. This product must not be used as for diagnostic or other medical purposes.
St John's Laboratory Ltd, Knowledge Dock Business Centre, University Way, London, E16 2RD | Tel: 0208 223 3081