

## Anti-SST antibody (10-59 aa) (STJ95730)

STJ95730

### GENERAL INFORMATION

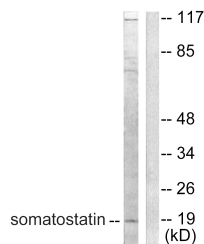
<b>Product Type</b>	Primary antibodies
<b>Short Description</b>	Rabbit polyclonal antibody anti-Somatostatin (10-59 aa) is suitable for use in Western Blot, Immunohistochemistry, Immunofluorescence and ELISA research applications.
<b>Applications</b>	WB/IHC/IF/ELISA
<b>Host/Source</b>	Rabbit
<b>Reactivity</b>	Human/Mouse/Rat

### PRODUCT PROPERTIES

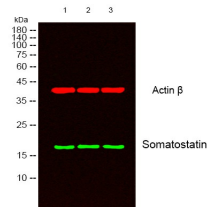
<b>Clonality</b>	Polyclonal
<b>Clone ID</b>	
<b>Concentration</b>	1 mg/mL
<b>Conjugation</b>	Unconjugated
<b>Purification</b>	The antibody was affinity-purified from rabbit antiserum by affinity-chromatography using epitope-specific immunogen.
<b>Dilution Range</b>	WB 1:500-1:2000 IHC 1:100-1:300 ELISA 1:5000 IF 1:50-200
<b>Formulation</b>	Liquid in PBS containing 50% Glycerol, 0.5% BSA and 0.02% Sodium Azide.
<b>Isotype</b>	IgG
<b>Storage Instruction</b>	Store at -20°C for up to 1 year from the date of receipt, and avoid repeat freeze-thaw cycles.

### TARGET INFORMATION

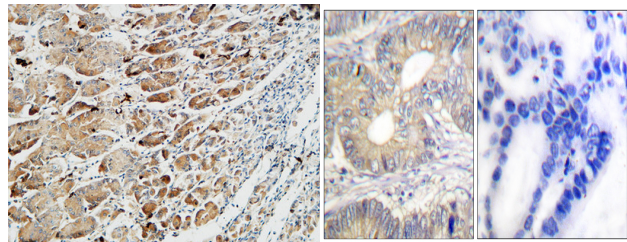
<b>Gene ID</b>	6750
<b>Gene Symbol</b>	SST
<b>Uniprot ID</b>	SMS_HUMAN
<b>Immunogen</b>	The antiserum was produced against synthesized peptide derived from the human Somatostatin at the amino acid range 10-59
<b>Immunogen Region</b>	10-59 aa
<b>Specificity</b>	Somatostatin Polyclonal Antibody detects endogenous levels of Somatostatin protein.
<b>Immunogen Sequence</b>	



Western blot analysis of lysates from A549 cells, using Somatostatin Antibody. The lane on the right is blocked with the synthesized peptide.



Western blot analysis of lysates from 1) PC-12, 2) A549, 3) HeLa cells. (Green) primary antibody was diluted at 1:1000, 4A°C over night, secondary antibody (cat: (NA) was diluted at 1:10000, 37A°C 1hour. (Red) Actin Beta monoclonal antibody (5B7) (cat: (STJ96930) antibody was diluted at 1:5000 as loading control, 4A°C over night, secondary antibody (cat: (NA) was diluted at 1:10000, 37A°C 1hour.



Immunohistochemical analysis of paraffin-embedded Human Gastric fundus. 1. Antibody was diluted at 1:200 (4A°C overnight). 2. High-pressure and temperature EDTA, pH8.0 was used for antigen retrieval. 3. Secondary antibody was diluted at 1:200 (room temperature, 30min).

Immunohistochemistry analysis of paraffin-embedded human colon carcinoma tissue, using Somatostatin Antibody. The picture on the right is blocked with the synthesized peptide.