

## Anti-EFTUD2 antibody (321-370 aa) (STJ95722)

STJ95722

### GENERAL INFORMATION

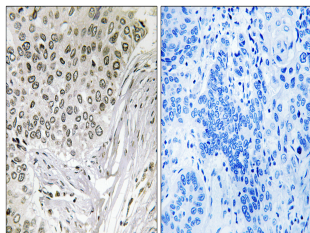
<b>Product Type</b>	Primary antibodies
<b>Short Description</b>	Rabbit polyclonal antibody anti-116 kDa U5 small nuclear ribonucleoprotein component (321-370 aa) is suitable for use in Western Blot, Immunohistochemistry, Immunofluorescence and ELISA research applications.
<b>Applications</b>	WB/IHC/IF/ELISA
<b>Host/Source</b>	Rabbit
<b>Reactivity</b>	Human/Mouse

### PRODUCT PROPERTIES

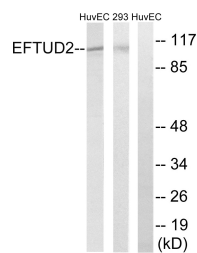
<b>Clonality</b>	Polyclonal
<b>Clone ID</b>	
<b>Concentration</b>	1 mg/mL
<b>Conjugation</b>	Unconjugated
<b>Purification</b>	The antibody was affinity-purified from rabbit antiserum by affinity-chromatography using epitope-specific immunogen.
<b>Dilution</b>	WB 1:500-1:2000
<b>Range</b>	IHC 1:100-1:300 ELISA 1:40000 IF 1:50-200
<b>Formulation</b>	Liquid in PBS containing 50% Glycerol, 0.5% BSA and 0.02% Sodium Azide.
<b>Isotype</b>	IgG
<b>Storage Instruction</b>	Store at -20°C for up to 1 year from the date of receipt, and avoid repeat freeze-thaw cycles.

### TARGET INFORMATION

<b>Gene ID</b>	9343
<b>Gene Symbol</b>	EFTUD2
<b>Uniprot ID</b>	U5S1_HUMAN
<b>Immunogen</b>	The antiserum was produced against synthesized peptide derived from the human EFTUD2 at the amino acid range 321-370
<b>Immunogen Region</b>	321-370 aa
<b>Specificity</b>	Snrp116 Polyclonal Antibody detects endogenous levels of Snrp116 protein.
<b>Immunogen Sequence</b>	



Immunohistochemistry analysis of paraffin-embedded human lung carcinoma tissue, using EFTUD2 Antibody. The picture on the right is blocked with the synthesized peptide.



Western blot analysis of lysates from 293 and HUVEC cells, using EFTUD2 Antibody. The lane on the right is blocked with the synthesized peptide.



Western blot analysis of various cells using Snrp116 Polyclonal Antibody cells nucleus extracted by Minute TM Cytoplasmic and Nuclear Fractionation kit (SC-003, InventiBiotech, MN, USA).