

Anti-PLK2 antibody (291-340 aa) (STJ95720)

STJ95720

GENERAL INFORMATION

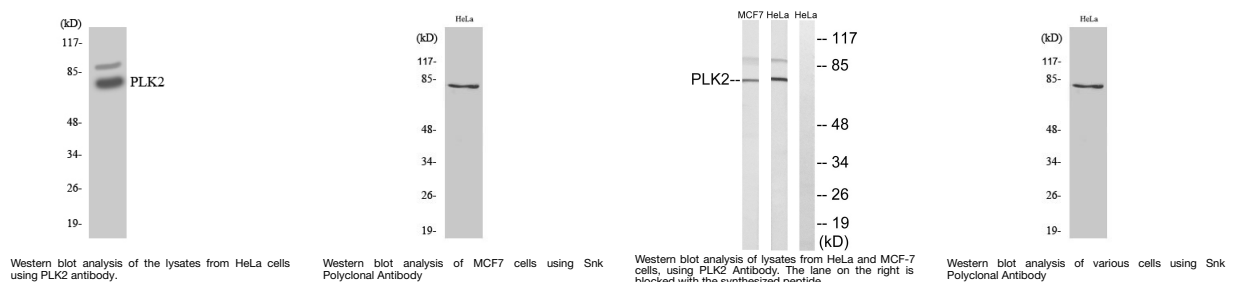
Product Type	Primary antibodies
Short Description	Rabbit polyclonal antibody anti-Serine/threonine-protein kinase PLK2 (291-340 aa) is suitable for use in Western Blot, Immunofluorescence, ELISA and Immunohistochemistry research applications.
Applications	WB/IF/ELISA/IHC
Host/Source	Rabbit
Reactivity	Human/Mouse/Rat

PRODUCT PROPERTIES

Clonality	Polyclonal
Clone ID	
Concentration	1 mg/mL
Conjugation	Unconjugated
Purification	The antibody was affinity-purified from rabbit antiserum by affinity-chromatography using epitope-specific immunogen.
Dilution	WB 1:500-2000
Range	IF ICC 1:50-200 ELISA 1:2000-20000 IHC-P 1:50-200
Formulation	Liquid in PBS containing 50% Glycerol, 0.5% BSA and 0.02% Sodium Azide.
Isotype	IgG
Storage Instruction	Store at -20°C for up to 1 year from the date of receipt, and avoid repeat freeze-thaw cycles.

TARGET INFORMATION

Gene ID	10769
Gene Symbol	PLK2
Uniprot ID	PLK2_HUMAN
Immunogen	The antiserum was produced against synthesized peptide derived from the human PLK2 at the amino acid range 291-340
Immunogen Region	291-340 aa
Specificity	Snk Polyclonal Antibody detects endogenous levels of Snk protein.
Immunogen Sequence	



This product is suitable for in-vitro studies under the RESEARCH USE ONLY [RUO] licence. This product must not be used as for diagnostic or other medical purposes.
St John's Laboratory Ltd, Knowledge Dock Business Centre, University Way, London, E16 2RD | Tel: 0208 223 3081