

Anti-SNAPC5 antibody (10-59 aa) (STJ95718)

STJ95718

GENERAL INFORMATION

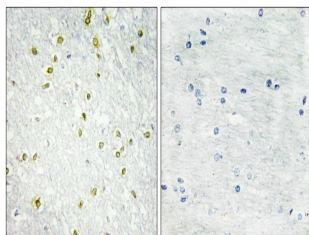
Product Type	Primary antibodies
Short Description	Rabbit polyclonal antibody anti-snRNA-activating protein complex subunit 5 (10-59 aa) is suitable for use in Immunohistochemistry, Immunofluorescence and ELISA research applications.
Applications	IHC/IF/ELISA
Host/Source	Rabbit
Reactivity	Human/Mouse

PRODUCT PROPERTIES

Clonality	Polyclonal
Clone ID	
Concentration	1 mg/mL
Conjugation	Unconjugated
Purification	The antibody was affinity-purified from rabbit antiserum by affinity-chromatography using epitope-specific immunogen.
Dilution Range	IHC 1:100-1:300 ELISA 1:10000 IF 1:50-200
Formulation	Liquid in PBS containing 50% Glycerol, 0.5% BSA and 0.02% Sodium Azide.
Isotype	IgG
Storage Instruction	Store at -20°C for up to 1 year from the date of receipt, and avoid repeat freeze-thaw cycles.

TARGET INFORMATION

Gene ID	10302
Gene Symbol	SNAPC5
Uniprot ID	SNPC5_HUMAN
Immunogen	The antiserum was produced against synthesized peptide derived from the human SNAPC5 at the amino acid range 10-59
Immunogen Region	10-59 aa
Specificity	SNAPC 19 Polyclonal Antibody detects endogenous levels of SNAPC 19 protein.
Immunogen Sequence	



Immunohistochemistry analysis of paraffin-embedded human brain tissue, using SNAPC5 Antibody. The picture on the right is blocked with the synthesized peptide.