

Anti-SNAP25 antibody (151-200 aa) (STJ95717)

STJ95717

GENERAL INFORMATION

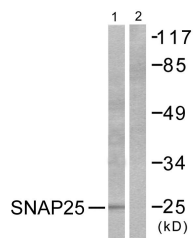
Product Type	Primary antibodies
Short Description	Rabbit polyclonal antibody anti-Synaptosomal-associated protein 25 (151-200 aa) is suitable for use in Western Blot, Immunohistochemistry, Immunofluorescence and ELISA research applications.
Applications	WB/IHC/IF/ELISA
Host/Source	Rabbit
Reactivity	Human/Mouse/Rat

PRODUCT PROPERTIES

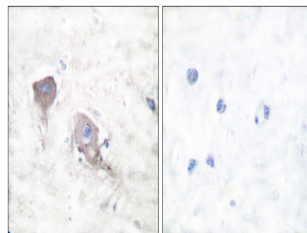
Clonality	Polyclonal
Clone ID	
Concentration	1 mg/mL
Conjugation	Unconjugated
Purification	The antibody was affinity-purified from rabbit antiserum by affinity-chromatography using epitope-specific immunogen.
Dilution	WB 1:500-1:2000
Range	IHC 1:100-1:300 ELISA 1:20000 IF 1:50-200
Formulation	Liquid in PBS containing 50% Glycerol, 0.5% BSA and 0.02% Sodium Azide.
Isotype	IgG
Storage Instruction	Store at -20°C for up to 1 year from the date of receipt, and avoid repeat freeze-thaw cycles.

TARGET INFORMATION

Gene ID	6616
Gene Symbol	SNAP25
Uniprot ID	SNP25_HUMAN
Immunogen	The antiserum was produced against synthesized peptide derived from the human SNAP25 at the amino acid range 151-200
Immunogen Region	151-200 aa
Specificity	SNAP 25 Polyclonal Antibody detects endogenous levels of SNAP 25 protein.
Immunogen Sequence	



Western blot analysis of lysates from Raw264.7 cells, treated with EGF 200ng/ml 30', using SNAP25 Antibody. The lane on the right is blocked with the synthesized peptide.



Immunohistochemistry analysis of paraffin-embedded human brain tissue, using SNAP25 Antibody. The picture on the right is blocked with the synthesized peptide.