

Anti-SMYD2 antibody (99-148 aa) (STJ95715)

STJ95715

GENERAL INFORMATION

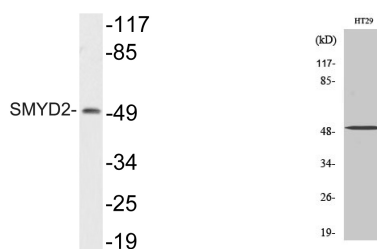
Product Type	Primary antibodies
Short Description	Rabbit polyclonal antibody anti-N-lysine methyltransferase SMYD2 (99-148 aa) is suitable for use in Western Blot, ELISA and Immunohistochemistry research applications.
Applications	WB/ELISA/IHC
Host/Source	Rabbit
Reactivity	Human/Mouse/Rat

PRODUCT PROPERTIES

Clonality	Polyclonal
Clone ID	
Concentration	1 mg/mL
Conjugation	Unconjugated
Purification	The antibody was affinity-purified from rabbit antiserum by affinity-chromatography using epitope-specific immunogen.
Dilution Range	WB 1:500-2000 IHC-P 1:50-300 ELISA 2000-20000
Formulation	Liquid in PBS containing 50% Glycerol, 0.5% BSA and 0.02% Sodium Azide.
Isotype	IgG
Storage Instruction	Store at -20°C for up to 1 year from the date of receipt, and avoid repeat freeze-thaw cycles.

TARGET INFORMATION

Gene ID	56950
Gene Symbol	SMYD2
Uniprot ID	SMYD2_HUMAN
Immunogen	The antiserum was produced against synthesized peptide derived from the human SMYD2 at the amino acid range 99-148
Immunogen Region	99-148 aa
Specificity	SMYD2 Polyclonal Antibody detects endogenous levels of SMYD2 protein.
Immunogen Sequence	



Western blot analysis of lysate from HT29 cells, using SMYD2 antibody.

Western blot analysis of various cells using SMYD2 Polyclonal Antibody diluted at 1:1000

This product is suitable for in-vitro studies under the RESEARCH USE ONLY [RUO] licence. This product must not be used as for diagnostic or other medical purposes.
St John's Laboratory Ltd, Knowledge Dock Business Centre, University Way, London, E16 2RD | Tel: 0208 223 3081