

## Anti-Smad2/3 antibody (1-50 aa) (STJ95697)

STJ95697

### GENERAL INFORMATION

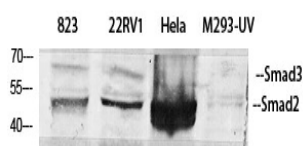
<b>Product Type</b>	Primary antibodies
<b>Short Description</b>	Rabbit polyclonal antibody anti-Mothers against decapentaplegic homolog 2 and Mothers against decapentaplegic homolog 3 (1-50 aa) is suitable for use in Western Blot, Immunohistochemistry, Immunofluorescence and ELISA research applications.
<b>Applications</b>	WB/IHC/IF/ELISA
<b>Host/Source</b>	Rabbit
<b>Reactivity</b>	Human/Mouse/Rat/Monkey/Pig

### PRODUCT PROPERTIES

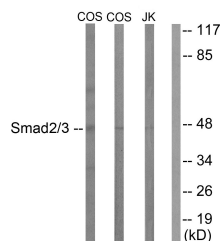
<b>Clonality</b>	Polyclonal
<b>Clone ID</b>	
<b>Concentration</b>	1 mg/mL
<b>Conjugation</b>	Unconjugated
<b>Purification</b>	The antibody was affinity-purified from rabbit antiserum by affinity-chromatography using epitope-specific immunogen.
<b>Dilution</b>	WB 1:500-1:2000
<b>Range</b>	IHC 1:100-1:300 ELISA 1:10000 IF 1:50-200
<b>Formulation</b>	Liquid in PBS containing 50% Glycerol, 0.5% BSA and 0.02% Sodium Azide.
<b>Isotype</b>	IgG
<b>Storage</b>	Store at -20°C for up to 1 year from the date of receipt, and avoid repeat freeze-thaw cycles.
<b>Instruction</b>	

### TARGET INFORMATION

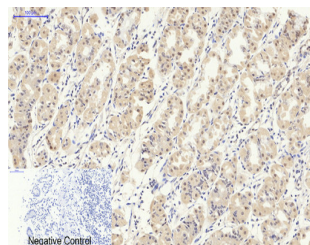
<b>Gene ID</b>	<a href="#">4087</a> <a href="#">4088</a>
<b>Gene Symbol</b>	<a href="#">SMAD2</a> <a href="#">SMAD3</a>
<b>Uniprot ID</b>	<a href="#">SMAD2_HUMAN</a> <a href="#">SMAD3_HUMAN</a>
<b>Immunogen</b>	The antiserum was produced against synthesized peptide derived from the human Smad2/3 at the amino acid range 1-50
<b>Immunogen Region</b>	1-50 aa
<b>Specificity</b>	Smad2/3 Polyclonal Antibody detects endogenous levels of Smad2/3 protein.
<b>Immunogen Sequence</b>	



Western blot analysis of various cells using Smad2/3 Polyclonal Antibody diluted at 1:500



Western blot analysis of lysates from COS7 and Jurkat cells, treated with UV 15', using Smad2/3 Antibody. The lane on the right is blocked with the synthesized peptide.



Immunohistochemical analysis of paraffin-embedded Human-stomach tissue. 1. Smad2/3 Polyclonal Antibody was diluted at 1:200 (4°C, overnight). 2. Sodium citrate pH 6.0 was used for antibody retrieval (~98°C, 20min). 3. Secondary antibody was diluted at 1:200 (room temperature, 30min). Negative control was used by secondary antibody only.

This product is suitable for in-vitro studies under the RESEARCH USE ONLY [RUO] licence. This product must not be used as for diagnostic or other medical purposes.  
St John's Laboratory Ltd, Knowledge Dock Business Centre, University Way, London, E16 2RD | Tel: 0208 223 3081