

Anti-SLC6A15 antibody (32-81 aa) (STJ95682)

STJ95682

GENERAL INFORMATION

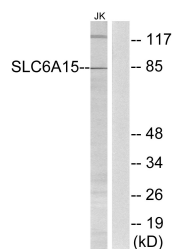
Product Type	Primary antibodies
Short Description	Rabbit polyclonal antibody anti-Sodium-dependent neutral amino acid transporter B0AT2 (32-81 aa) is suitable for use in Western Blot and Immunohistochemistry research applications.
Applications	WB/IHC
Host/Source	Rabbit
Reactivity	Human/Rat/Mouse

PRODUCT PROPERTIES

Clonality	Polyclonal
Clone ID	
Concentration	1 mg/mL
Conjugation	Unconjugated
Purification	The antibody was affinity-purified from rabbit antiserum by affinity-chromatography using epitope-specific immunogen.
Dilution Range	WB 1:500-2000 IHC-P 1:50-300
Formulation	Liquid in PBS containing 50% Glycerol, 0.5% BSA and 0.02% Sodium Azide.
Isotype	IgG
Storage	Store at -20°C for up to 1 year from the date of receipt, and avoid repeat freeze-thaw cycles.
Instruction	

TARGET INFORMATION

Gene ID	55117
Gene Symbol	SLC6A15
Uniprot ID	S6A15_HUMAN
Immunogen	The antiserum was produced against synthesized peptide derived from the human SLC6A15 at the amino acid range 32-81
Immunogen Region	32-81 aa
Specificity	SLC6A15 Polyclonal Antibody detects endogenous levels of SLC6A15 protein.
Immunogen Sequence	



Western blot analysis of lysates from Jurkat cells, using SLC6A15 Antibody. The lane on the right is blocked with the synthesized peptide.