

Anti-SLC4A8/10 antibody (411-460 aa) (STJ95681)

STJ95681

GENERAL INFORMATION

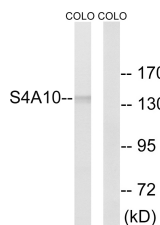
Product Type	Primary antibodies
Short Description	Rabbit polyclonal antibody anti-Electroneutral sodium bicarbonate exchanger 1 and Sodium-driven chloride bicarbonate exchanger (411-460 aa) is suitable for use in Western Blot, Immunohistochemistry, Immunofluorescence and ELISA research applications.
Applications	WB/IHC/IF/ELISA
Host/Source	Rabbit
Reactivity	Human/Mouse/Rat

PRODUCT PROPERTIES

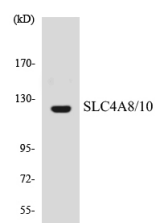
Clonality	Polyclonal
Clone ID	
Concentration	1 mg/mL
Conjugation	Unconjugated
Purification	The antibody was affinity-purified from rabbit antiserum by affinity-chromatography using epitope-specific immunogen.
Dilution	WB 1:500-1:2000
Range	IHC 1:100-1:300 ELISA 1:40000 IF 1:50-200
Formulation	Liquid in PBS containing 50% Glycerol, 0.5% BSA and 0.02% Sodium Azide.
Isotype	IgG
Storage Instruction	Store at -20°C for up to 1 year from the date of receipt, and avoid repeat freeze-thaw cycles.

TARGET INFORMATION

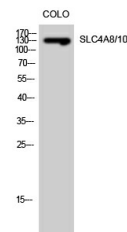
Gene ID	57282 9498
Gene Symbol	SLC4A10 SLC4A8
Uniprot ID	S4A10_HUMAN S4A8_HUMAN
Immunogen	The antiserum was produced against synthesized peptide derived from the human SLC4A8/10 at the amino acid range 411-460
Immunogen Region	411-460 aa
Specificity	SLC4A8/10 Polyclonal Antibody detects endogenous levels of SLC4A8/10 protein.
Immunogen Sequence	



Western blot analysis of lysates from COLO cells, using SLC4A8/10 Antibody. The lane on the right is blocked with the synthesized peptide.



Western blot analysis of the lysates from HUVEC cells using SLC4A8/10 antibody.



Western blot analysis of COLO cells using SLC4A8/10 Polyclonal Antibody diluted at 1:500

This product is suitable for in-vitro studies under the RESEARCH USE ONLY [RUO] licence. This product must not be used as for diagnostic or other medical purposes.
St John's Laboratory Ltd, Knowledge Dock Business Centre, University Way, London, E16 2RD | Tel: 0208 223 3081