

Anti-SLC43A1 antibody (231-280 aa) (STJ95680)

STJ95680

GENERAL INFORMATION

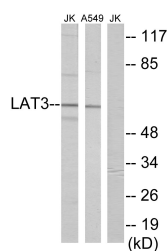
Product Type	Primary antibodies
Short Description	Rabbit polyclonal antibody anti-Large neutral amino acids transporter small subunit 3 (231-280 aa) is suitable for use in Western Blot, ELISA and Immunohistochemistry research applications.
Applications	WB/ELISA/IHC
Host/Source	Rabbit
Reactivity	Human/Rat/Mouse

PRODUCT PROPERTIES

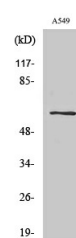
Clonality	Polyclonal
Clone ID	
Concentration	1 mg/mL
Conjugation	Unconjugated
Purification	The antibody was affinity-purified from rabbit antiserum by affinity-chromatography using epitope-specific immunogen.
Dilution Range	WB 1:500-2000 IHC-P 1:50-300 ELISA 2000-20000
Formulation	Liquid in PBS containing 50% Glycerol, 0.5% BSA and 0.02% Sodium Azide.
Isotype	IgG
Storage Instruction	Store at -20°C for up to 1 year from the date of receipt, and avoid repeat freeze-thaw cycles.

TARGET INFORMATION

Gene ID	8501
Gene Symbol	SLC43A1
Uniprot ID	LAT3_HUMAN
Immunogen	The antiserum was produced against synthesized peptide derived from the human LAT3 at the amino acid range 231-280
Immunogen Region	231-280 aa
Specificity	SLC43A1 Polyclonal Antibody detects endogenous levels of SLC43A1 protein.
Immunogen Sequence	



Western blot analysis of lysates from A549 and Jurkat cells, using LAT3 Antibody. The lane on the right is blocked with the synthesized peptide.



Western blot analysis of various cells using SLC43A1 Polyclonal Antibody

This product is suitable for in-vitro studies under the RESEARCH USE ONLY [RUO] licence. This product must not be used as for diagnostic or other medical purposes.
St John's Laboratory Ltd, Knowledge Dock Business Centre, University Way, London, E16 2RD | Tel: 0208 223 3081