

Anti-PTPN11 antibody (321-370 aa) (STJ95660)

STJ95660

GENERAL INFORMATION

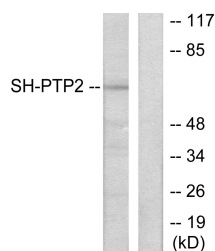
Product Type	Primary antibodies
Short Description	Rabbit polyclonal antibody anti-Tyrosine-protein phosphatase non-receptor type 11 (321-370 aa) is suitable for use in Western Blot, Immunohistochemistry, Immunofluorescence and ELISA research applications.
Applications	WB/IHC/IF/ELISA
Host/Source	Rabbit
Reactivity	Human/Mouse/Rat/Monkey

PRODUCT PROPERTIES

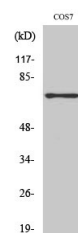
Clonality	Polyclonal
Clone ID	
Concentration	1 mg/mL
Conjugation	Unconjugated
Purification	The antibody was affinity-purified from rabbit antiserum by affinity-chromatography using epitope-specific immunogen.
Dilution	WB 1:500-1:2000
Range	IHC 1:100-1:300 ELISA 1:40000 IF 1:50-200
Formulation	Liquid in PBS containing 50% Glycerol, 0.5% BSA and 0.02% Sodium Azide.
Isotype	IgG
Storage	Store at -20°C for up to 1 year from the date of receipt, and avoid repeat freeze-thaw cycles.
Instruction	

TARGET INFORMATION

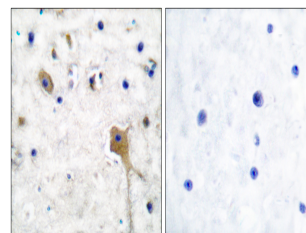
Gene ID	5781
Gene Symbol	PTPN11
Uniprot ID	PTN11_HUMAN
Immunogen	The antiserum was produced against synthesized peptide derived from the human SH-PTP2 at the amino acid range 321-370
Immunogen	321-370 aa
Region	
Specificity	SH-PTP2 Polyclonal Antibody detects endogenous levels of SH-PTP2 protein.
Immunogen	
Sequence	



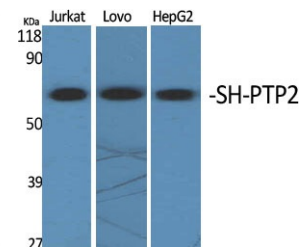
Western blot analysis of lysates from COS7 cells, using SH-PTP2 Antibody. The lane on the right is blocked with the synthesized peptide.



Western blot analysis of COS7 cells using SH-PTP2 Polyclonal Antibody diluted at 1:14 2000



Immunohistochemistry analysis of paraffin-embedded human brain tissue, using SH-PTP2 Antibody. The picture on the right is blocked with the synthesized peptide.



Western blot analysis of various cells using SH-PTP2 Polyclonal Antibody diluted at 1:14 2000

This product is suitable for in-vitro studies under the RESEARCH USE ONLY [RUO] licence. This product must not be used as for diagnostic or other medical purposes.
St John's Laboratory Ltd, Knowledge Dock Business Centre, University Way, London, E16 2RD | Tel: 0208 223 3081