

Anti-SGO1 antibody (271-320 aa) (STJ95640)

STJ95640

GENERAL INFORMATION

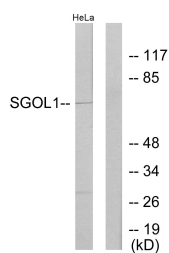
Product Type	Primary antibodies
Short Description	Rabbit polyclonal antibody anti-Shugoshin 1 (271-320 aa) is suitable for use in Western Blot, Immunohistochemistry, Immunofluorescence and ELISA research applications.
Applications	WB/IHC/IF/ELISA
Host/Source	Rabbit
Reactivity	Human/Rat/Mouse

PRODUCT PROPERTIES

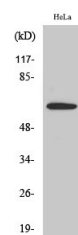
Clonality	Polyclonal
Clone ID	
Concentration	1 mg/mL
Conjugation	Unconjugated
Purification	The antibody was affinity-purified from rabbit antiserum by affinity-chromatography using epitope-specific immunogen.
Dilution Range	WB 1:500-1:2000 IHC 1:100-1:300 ELISA 1:20000 IF 1:50-200
Formulation	Liquid in PBS containing 50% Glycerol, 0.5% BSA and 0.02% Sodium Azide.
Isotype	IgG
Storage Instruction	Store at -20°C for up to 1 year from the date of receipt, and avoid repeat freeze-thaw cycles.

TARGET INFORMATION

Gene ID	151648
Gene Symbol	SGO1
Uniprot ID	SGO1_HUMAN
Immunogen	The antiserum was produced against synthesized peptide derived from the human SGOL1 at the amino acid range 271-320
Immunogen Region	271-320 aa
Specificity	Sgo1 Polyclonal Antibody detects endogenous levels of Sgo1 protein.
Immunogen Sequence	



Western blot analysis of lysates from HeLa cells, using SGO1 Antibody. The lane on the right is blocked with the synthesized peptide.



Western blot analysis of various cells using Sgo1 Polyclonal Antibody cells nucleus extracted by Minute TM Cytoplasmic and Nuclear Fractionation kit (SC-003, Inventiotech, MN, USA).