

## Anti-SLC5A2 antibody (101-150 aa) (STJ95639)

STJ95639

### GENERAL INFORMATION

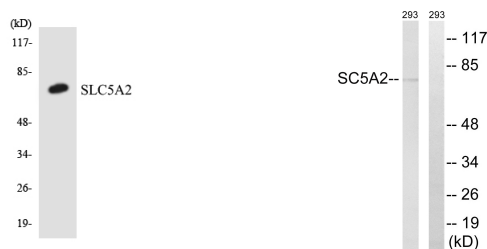
<b>Product Type</b>	Primary antibodies
<b>Short Description</b>	Rabbit polyclonal antibody anti-Sodium/glucose cotransporter 2/glucose cotransporter 2 (101-150 aa) is suitable for use in Western Blot and Immunohistochemistry research applications.
<b>Applications</b>	WB/IHC
<b>Host/Source</b>	Rabbit
<b>Reactivity</b>	Human/Mouse/Rat

### PRODUCT PROPERTIES

<b>Clonality</b>	Polyclonal
<b>Clone ID</b>	
<b>Concentration</b>	1 mg/mL
<b>Conjugation</b>	Unconjugated
<b>Purification</b>	The antibody was affinity-purified from rabbit antiserum by affinity-chromatography using epitope-specific immunogen.
<b>Dilution Range</b>	WB 1:500-2000 IHC-P 1:50-300
<b>Formulation</b>	Liquid in PBS containing 50% Glycerol, 0.5% BSA and 0.02% Sodium Azide.
<b>Isotype</b>	IgG
<b>Storage</b>	Store at -20°C for up to 1 year from the date of receipt, and avoid repeat freeze-thaw cycles.
<b>Instruction</b>	

### TARGET INFORMATION

<b>Gene ID</b>	6524
<b>Gene Symbol</b>	SLC5A2
<b>Uniprot ID</b>	SC5A2_HUMAN
<b>Immunogen</b>	The antiserum was produced against synthesized peptide derived from the human SLC5A2 at the amino acid range 101-150
<b>Immunogen Region</b>	101-150 aa
<b>Specificity</b>	SGLT-2 Polyclonal Antibody detects endogenous levels of SGLT-2 protein.
<b>Immunogen Sequence</b>	



Western blot analysis of the lysates from Jurkat cells using SLC5A2 antibody.

Western blot analysis of lysates from 293 cells, using SLC5A2 Antibody. The lane on the right is blocked with the synthesized peptide.

This product is suitable for in-vitro studies under the RESEARCH USE ONLY [RUO] licence. This product must not be used as for diagnostic or other medical purposes.  
St John's Laboratory Ltd, Knowledge Dock Business Centre, University Way, London, E16 2RD | Tel: 0208 223 3081