

## Anti-SLC5A1 antibody (525-574 aa) (STJ95638)

STJ95638

### GENERAL INFORMATION

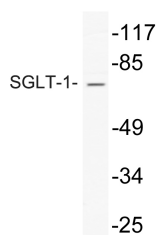
<b>Product Type</b>	Primary antibodies
<b>Short Description</b>	Rabbit polyclonal antibody anti-Sodium/glucose cotransporter 1/glucose cotransporter 1 (525-574 aa) is suitable for use in Western Blot, ELISA and Immunohistochemistry research applications.
<b>Applications</b>	WB/ELISA/IHC
<b>Host/Source</b>	Rabbit
<b>Reactivity</b>	Human/Mouse/Rat

### PRODUCT PROPERTIES

<b>Clonality</b>	Polyclonal
<b>Clone ID</b>	
<b>Concentration</b>	1 mg/mL
<b>Conjugation</b>	Unconjugated
<b>Purification</b>	The antibody was affinity-purified from rabbit antiserum by affinity-chromatography using epitope-specific immunogen.
<b>Dilution Range</b>	WB 1:500-2000 IHC-P 1:50-300 ELISA 2000-20000
<b>Formulation</b>	Liquid in PBS containing 50% Glycerol, 0.5% BSA and 0.02% Sodium Azide.
<b>Isotype</b>	IgG
<b>Storage Instruction</b>	Store at -20°C for up to 1 year from the date of receipt, and avoid repeat freeze-thaw cycles.

### TARGET INFORMATION

<b>Gene ID</b>	6523
<b>Gene Symbol</b>	SLC5A1
<b>Uniprot ID</b>	SC5A1_HUMAN
<b>Immunogen</b>	The antiserum was produced against synthesized peptide derived from the human SGLT-1 at the amino acid range 525-574
<b>Immunogen Region</b>	525-574 aa
<b>Specificity</b>	SGLT-1 Polyclonal Antibody detects endogenous levels of SGLT-1 protein.
<b>Immunogen Sequence</b>	



Western blot analysis of lysate from HepG2 cells, using SGLT-1 antibody.

This product is suitable for in-vitro studies under the RESEARCH USE ONLY [RUO] licence. This product must not be used as for diagnostic or other medical purposes.  
St John's Laboratory Ltd, Knowledge Dock Business Centre, University Way, London, E16 2RD | Tel: 0208 223 3081