

Anti-PEAK1 antibody (111-160 aa) (STJ95636)

STJ95636

GENERAL INFORMATION

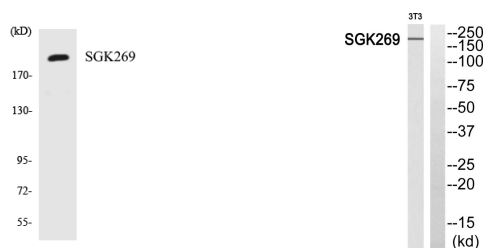
Product Type	Primary antibodies
Short Description	Rabbit polyclonal antibody anti-Inactive tyrosine-protein kinase PEAK1 (111-160 aa) is suitable for use in Western Blot and Immunohistochemistry research applications.
Applications	WB/IHC
Host/Source	Rabbit
Reactivity	Human/Rat/Mouse

PRODUCT PROPERTIES

Clonality	Polyclonal
Clone ID	
Concentration	1 mg/mL
Conjugation	Unconjugated
Purification	The antibody was affinity-purified from rabbit antiserum by affinity-chromatography using epitope-specific immunogen.
Dilution Range	WB 1:500-2000 IHC-P 1:50-300
Formulation	Liquid in PBS containing 50% Glycerol, 0.5% BSA and 0.02% Sodium Azide.
Isotype	IgG
Storage	Store at -20°C for up to 1 year from the date of receipt, and avoid repeat freeze-thaw cycles.
Instruction	

TARGET INFORMATION

Gene ID	79834
Gene Symbol	PEAK1
Uniprot ID	PEAK1_HUMAN
Immunogen	The antiserum was produced against synthesized peptide derived from the human SGK269 at the amino acid range 111-160
Immunogen Region	111-160 aa
Specificity	SgK269 Polyclonal Antibody detects endogenous levels of SgK269 protein.
Immunogen Sequence	



Western blot analysis of the lysates from 293 cells using SGK269 antibody. The lane on the right is blocked with the SGK269 peptide.

This product is suitable for in-vitro studies under the RESEARCH USE ONLY [RUO] licence. This product must not be used as for diagnostic or other medical purposes.
St John's Laboratory Ltd, Knowledge Dock Business Centre, University Way, London, E16 2RD | Tel: 0208 223 3081