

## Anti-SGK1 antibody (381-430 aa) (STJ95633)

STJ95633

### GENERAL INFORMATION

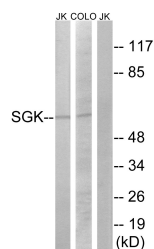
<b>Product Type</b>	Primary antibodies
<b>Short Description</b>	Rabbit polyclonal antibody anti-Serine/threonine-protein kinase Sgk1 (381-430 aa) is suitable for use in Immunofluorescence, Western Blot, Immunohistochemistry and ELISA research applications.
<b>Applications</b>	IF/WB/IHC/ELISA
<b>Host/Source</b>	Rabbit
<b>Reactivity</b>	Human/Mouse/Rat

### PRODUCT PROPERTIES

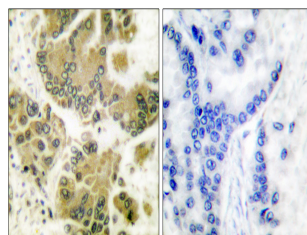
<b>Clonality</b>	Polyclonal
<b>Clone ID</b>	
<b>Concentration</b>	1 mg/mL
<b>Conjugation</b>	Unconjugated
<b>Purification</b>	The antibody was affinity-purified from rabbit antiserum by affinity-chromatography using epitope-specific immunogen.
<b>Dilution</b>	IF 1:50-200
<b>Range</b>	WB 1:500-1:2000 IHC 1:100-1:300 ELISA 1:5000
<b>Formulation</b>	Liquid in PBS containing 50% Glycerol, 0.5% BSA and 0.02% Sodium Azide.
<b>Isotype</b>	IgG
<b>Storage</b>	Store at -20°C up to 1 year from the date of receipt, and avoid repeat freeze-thaw cycles.
<b>Instruction</b>	

### TARGET INFORMATION

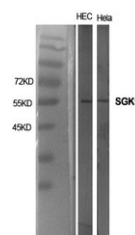
<b>Gene ID</b>	6446
<b>Gene Symbol</b>	SGK1
<b>Uniprot ID</b>	SGK1_HUMAN
<b>Immunogen</b>	The antiserum was produced against synthesized peptide derived from the human SGK at the amino acid range 381-430
<b>Immunogen</b>	381-430 aa
<b>Region</b>	
<b>Specificity</b>	SGK1 Polyclonal Antibody detects endogenous levels of SGK1 protein.
<b>Immunogen</b>	
<b>Sequence</b>	



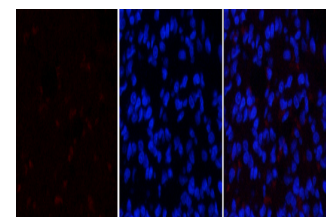
Western blot analysis of lysates from Jurkat and COLO205 cells, using SGK Antibody. The lane on the right is blocked with the synthesized peptide.



Immunohistochemistry analysis of paraffin-embedded human breast carcinoma tissue, using SGK Antibody. The picture on the right is blocked with the synthesized peptide.



Western blot analysis of various cells using SGK1 Polyclonal Antibody diluted at 1/104 1000



Immunofluorescence analysis of rat-lung tissue. 1. SGK1 Polyclonal Antibody (red) was diluted at 1:200 (4A°C, overnight). 2. Cy3 labeled Secondary antibody was diluted at 1:300 (room temperature, 50min). 3. Picture B: DAPI (blue) 10min. Picture A:Target. Picture B: DAPI. Picture C: merge of A+B

This product is suitable for in-vitro studies under the RESEARCH USE ONLY [RUO] licence. This product must not be used as for diagnostic or other medical purposes.  
St John's Laboratory Ltd, Knowledge Dock Business Centre, University Way, London, E16 2RD | Tel: 0208 223 3081