

Anti-SF3B3 antibody (231-280 aa) (STJ95627)

STJ95627

GENERAL INFORMATION

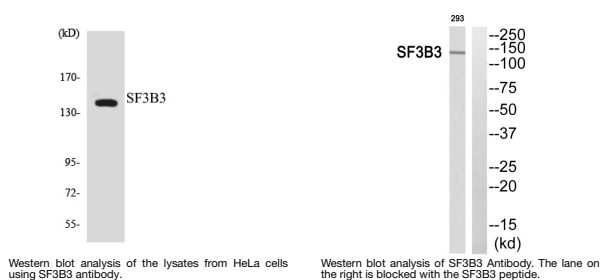
| | |
|--------------------------|--|
| Product Type | Primary antibodies |
| Short Description | Rabbit polyclonal antibody anti-Splicing factor 3B subunit 3 (231-280 aa) is suitable for use in Western Blot, ELISA and Immunohistochemistry research applications. |
| Applications | WB/ELISA/IHC |
| Host/Source | Rabbit |
| Reactivity | Human/Mouse |

PRODUCT PROPERTIES

| | |
|----------------------------|---|
| Clonality | Polyclonal |
| Clone ID | |
| Concentration | 1 mg/mL |
| Conjugation | Unconjugated |
| Purification | The antibody was affinity-purified from rabbit antiserum by affinity-chromatography using epitope-specific immunogen. |
| Dilution Range | WB 1:500-2000 IHC-P 1:50-300 ELISA 2000-20000 |
| Formulation | Liquid in PBS containing 50% Glycerol, 0.5% BSA and 0.02% Sodium Azide. |
| Isotype | IgG |
| Storage Instruction | Store at -20°C for up to 1 year from the date of receipt, and avoid repeat freeze-thaw cycles. |

TARGET INFORMATION

| | |
|---------------------------|---|
| Gene ID | 23450 |
| Gene Symbol | SF3B3 |
| Uniprot ID | SF3B3_HUMAN |
| Immunogen | The antiserum was produced against synthesized peptide derived from the human SF3B3 at the amino acid range 231-280 |
| Immunogen Region | 231-280 aa |
| Specificity | SF3b130 Polyclonal Antibody detects endogenous levels of SF3b130 protein. |
| Immunogen Sequence | |



This product is suitable for in-vitro studies under the RESEARCH USE ONLY [RUO] licence. This product must not be used as for diagnostic or other medical purposes.
St John's Laboratory Ltd, Knowledge Dock Business Centre, University Way, London, E16 2RD | Tel: 0208 223 3081