

Anti-ATP2A1 antibody (548-597 aa) (STJ95618)

STJ95618

GENERAL INFORMATION

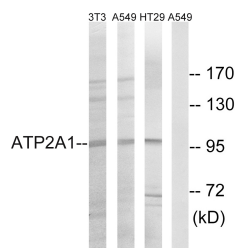
Product Type	Primary antibodies
Short Description	Rabbit polyclonal antibody anti-Sarcoplasmic/endoplasmic reticulum calcium ATPase 1-ATPase 1 (548-597 aa) is suitable for use in Western Blot, Immunohistochemistry, Immunofluorescence and ELISA research applications.
Applications	WB/IHC/IF/ELISA
Host/Source	Rabbit
Reactivity	Human/Mouse/Rat/Salamander/Pig

PRODUCT PROPERTIES

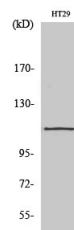
Clonality	Polyclonal
Clone ID	
Concentration	1 mg/mL
Conjugation	Unconjugated
Purification	The antibody was affinity-purified from rabbit antiserum by affinity-chromatography using epitope-specific immunogen.
Dilution	WB 1:500-1:2000
Range	IHC 1:100-1:300 ELISA 1:10000 IF 1:50-200
Formulation	Liquid in PBS containing 50% Glycerol, 0.5% BSA and 0.02% Sodium Azide.
Isotype	IgG
Storage	Store at -20°C for up to 1 year from the date of receipt, and avoid repeat freeze-thaw cycles.
Instruction	

TARGET INFORMATION

Gene ID	487
Gene Symbol	ATP2A1
Uniprot ID	AT2A1_HUMAN
Immunogen	The antiserum was produced against synthesized peptide derived from the human ATP2A1 at the amino acid range 548-597
Immunogen	548-597 aa
Region	
Specificity	SERCA1 Polyclonal Antibody detects endogenous levels of SERCA1 protein.
Immunogen	
Sequence	



Western blot analysis of lysates from HT-29, A549, and NIH/3T3 cells, using ATP2A1 Antibody. The lane on the right is blocked with the synthesized peptide.



Western blot analysis of various cells using SERCA1 Polyclonal Antibody diluted at 1/14 2000

This product is suitable for in-vitro studies under the RESEARCH USE ONLY [RUO] licence. This product must not be used as for diagnostic or other medical purposes.
St John's Laboratory Ltd, Knowledge Dock Business Centre, University Way, London, E16 2RD | Tel: 0208 223 3081