

Anti-SEC16A antibody (1013-1062 aa) (STJ95593)

STJ95593

GENERAL INFORMATION

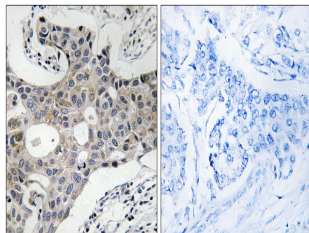
Product Type	Primary antibodies
Short Description	Rabbit polyclonal antibody anti-Protein transport protein Sec16A (1013-1062 aa) is suitable for use in Immunohistochemistry, Immunofluorescence and ELISA research applications.
Applications	IHC/IF/ELISA
Host/Source	Rabbit
Reactivity	Human/Rat/Mouse

PRODUCT PROPERTIES

Clonality	Polyclonal
Clone ID	
Concentration	1 mg/mL
Conjugation	Unconjugated
Purification	The antibody was affinity-purified from rabbit antiserum by affinity-chromatography using epitope-specific immunogen.
Dilution Range	IHC 1:100-1:300 ELISA 1:20000 IF 1:50-200
Formulation	Liquid in PBS containing 50% Glycerol, 0.5% BSA and 0.02% Sodium Azide.
Isotype	IgG
Storage Instruction	Store at -20°C for up to 1 year from the date of receipt, and avoid repeat freeze-thaw cycles.

TARGET INFORMATION

Gene ID	9919
Gene Symbol	SEC16A
Uniprot ID	SC16A_HUMAN
Immunogen	The antiserum was produced against synthesized peptide derived from the human SEC16A at the amino acid range 1013-1062
Immunogen Region	1013-1062 aa
Specificity	Sec16A Polyclonal Antibody detects endogenous levels of Sec16A protein.
Immunogen Sequence	



Immunohistochemistry analysis of paraffin-embedded human breast carcinoma, using SEC16A Antibody. The picture on the right is blocked with the synthesized peptide.