

Anti-SHC2 antibody (261-310 aa) (STJ95587)

STJ95587

GENERAL INFORMATION

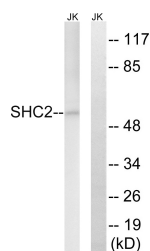
Product Type	Primary antibodies
Short Description	Rabbit polyclonal antibody anti-SHC-transforming protein 2 (261-310 aa) is suitable for use in Western Blot and Immunohistochemistry research applications.
Applications	WB/IHC
Host/Source	Rabbit
Reactivity	Human/Rat

PRODUCT PROPERTIES

Clonality	Polyclonal
Clone ID	
Concentration	1 mg/mL
Conjugation	Unconjugated
Purification	The antibody was affinity-purified from rabbit antiserum by affinity-chromatography using epitope-specific immunogen.
Dilution Range	WB 1:500-2000 IHC-P 1:50-300
Formulation	Liquid in PBS containing 50% Glycerol, 0.5% BSA and 0.02% Sodium Azide.
Isotype	IgG
Storage	Store at -20°C for up to 1 year from the date of receipt, and avoid repeat freeze-thaw cycles.
Instruction	

TARGET INFORMATION

Gene ID	25759
Gene Symbol	SHC2
Uniprot ID	SHC2_HUMAN
Immunogen	The antiserum was produced against synthesized peptide derived from the human SHC2 at the amino acid range 261-310
Immunogen Region	261-310 aa
Specificity	Sck Polyclonal Antibody detects endogenous levels of Sck protein.
Immunogen Sequence	



Western blot analysis of lysates from Jurkat cells, using SHC2 Antibody. The lane on the right is blocked with the synthesized peptide.