

Anti-SCAND1 antibody (61-110 aa) (STJ95584)

STJ95584

GENERAL INFORMATION

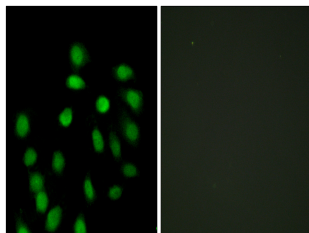
Product Type	Primary antibodies
Short Description	Rabbit polyclonal antibody anti-SCAN domain-containing protein 1 (61-110 aa) is suitable for use in Western Blot, Immunohistochemistry, Immunofluorescence and ELISA research applications.
Applications	WB/IHC/IF/ELISA
Host/Source	Rabbit
Reactivity	Human/Rat/Mouse

PRODUCT PROPERTIES

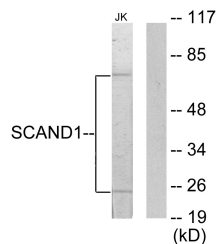
Clonality	Polyclonal
Clone ID	
Concentration	1 mg/mL
Conjugation	Unconjugated
Purification	The antibody was affinity-purified from rabbit antiserum by affinity-chromatography using epitope-specific immunogen.
Dilution Range	WB 1:500-1:2000 IHC 1:100-1:300 IF 1:200-1:1000 ELISA 1:20000
Formulation	Liquid in PBS containing 50% Glycerol, 0.5% BSA and 0.02% Sodium Azide.
Isotype	IgG
Storage	Store at -20°C for up to 1 year from the date of receipt, and avoid repeat freeze-thaw cycles.
Instruction	

TARGET INFORMATION

Gene ID	51282
Gene Symbol	SCAND1
Uniprot ID	SCND1_HUMAN
Immunogen	The antiserum was produced against synthesized peptide derived from the human SCAND1 at the amino acid range 61-110
Immunogen Region	61-110 aa
Specificity	SCAND1 Polyclonal Antibody detects endogenous levels of SCAND1 protein.
Immunogen Sequence	



Immunofluorescence analysis of HepG2 cells, using SCAND1 Antibody. The picture on the right is blocked with the synthesized peptide.



Western blot analysis of lysates from Jurkat cells, using SCAND1 Antibody. The lane on the right is blocked with the synthesized peptide.



Western blot analysis of various cells using SCAND1 Polyclonal Antibody cells nucleus extracted by Minute TM Cytoplasmic and Nuclear Fractionation kit (SC-003, Inventorlab, MN, USA).