

Anti-SGCB antibody (87-136 aa) (STJ95581)

STJ95581

GENERAL INFORMATION

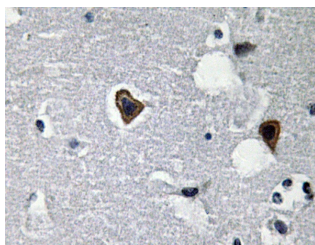
Product Type	Primary antibodies
Short Description	Rabbit polyclonal antibody anti-Beta-sarcoglycan (87-136 aa) is suitable for use in Western Blot, Immunohistochemistry, Immunofluorescence and ELISA research applications.
Applications	WB/IHC/IF/ELISA
Host/Source	Rabbit
Reactivity	Human/Mouse

PRODUCT PROPERTIES

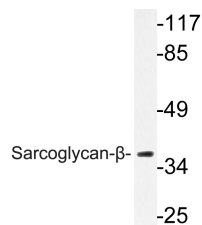
Clonality	Polyclonal
Clone ID	
Concentration	1 mg/mL
Conjugation	Unconjugated
Purification	The antibody was affinity-purified from rabbit antiserum by affinity-chromatography using epitope-specific immunogen.
Dilution Range	WB 1:500-1:2000 IHC 1:100-1:300 ELISA 1:40000 IF 1:50-200
Formulation	Liquid in PBS containing 50% Glycerol, 0.5% BSA and 0.02% Sodium Azide.
Isotype	IgG
Storage Instruction	Store at -20°C for up to 1 year from the date of receipt, and avoid repeat freeze-thaw cycles.

TARGET INFORMATION

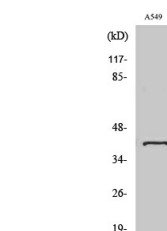
Gene ID	6443
Gene Symbol	SGCB
Uniprot ID	SGCB_HUMAN
Immunogen	The antiserum was produced against synthesized peptide derived from the human Sarcoglycan-beta at the amino acid range 87-136
Immunogen Region	87-136 aa
Specificity	Sarcoglycan-Beta Polyclonal Antibody detects endogenous levels of Sarcoglycan-Beta protein.
Immunogen Sequence	



Immunohistochemistry analysis of Sarcoglycan-Beta antibody in paraffin-embedded human brain tissue.



Western blot analysis of lysate from A549 cells, using Sarcoglycan-Beta antibody.



Western blot analysis of various cells using Sarcoglycan-Beta Polyclonal Antibody

This product is suitable for in-vitro studies under the RESEARCH USE ONLY [RUO] licence. This product must not be used as for diagnostic or other medical purposes.
St John's Laboratory Ltd, Knowledge Dock Business Centre, University Way, London, E16 2RD | Tel: 0208 223 3081