

Anti-PSAP antibody (307-356 aa) (STJ95578)

STJ95578

GENERAL INFORMATION

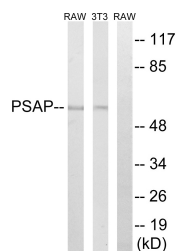
Product Type	Primary antibodies
Short Description	Rabbit polyclonal antibody anti-Prosaposin (307-356 aa) is suitable for use in Western Blot, Immunohistochemistry, Immunofluorescence and ELISA research applications.
Applications	WB/IHC/IF/ELISA
Host/Source	Rabbit
Reactivity	Human/Rat/Mouse

PRODUCT PROPERTIES

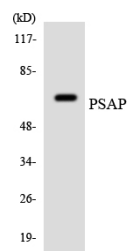
Clonality	Polyclonal
Clone ID	
Concentration	1 mg/mL
Conjugation	Unconjugated
Purification	The antibody was affinity-purified from rabbit antiserum by affinity-chromatography using epitope-specific immunogen.
Dilution Range	WB 1:500-1:2000 IHC 1:100-1:300 ELISA 1:20000 IF 1:50-200
Formulation	Liquid in PBS containing 50% Glycerol, 0.5% BSA and 0.02% Sodium Azide.
Isotype	IgG
Storage Instruction	Store at -20°C for up to 1 year from the date of receipt, and avoid repeat freeze-thaw cycles.

TARGET INFORMATION

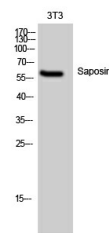
Gene ID	5660
Gene Symbol	PSAP
Uniprot ID	SAP_HUMAN
Immunogen	The antiserum was produced against synthesized peptide derived from the human PSAP at the amino acid range 307-356
Immunogen Region	307-356 aa
Specificity	Saposin Polyclonal Antibody detects endogenous levels of Saposin protein.
Immunogen Sequence	



Western blot analysis of lysates from NIH/3T3 and RAW264.7 cells, using PSAP Antibody. The lane on the right is blocked with the synthesized peptide.



Western blot analysis of the lysates from HeLa cells using PSAP antibody.



Western blot analysis of 3T3 cells using Saposin Polyclonal Antibody.