

## Anti-KHDRBS1 antibody (96-145 aa) (STJ95574)

STJ95574

### GENERAL INFORMATION

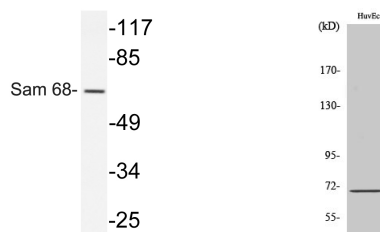
<b>Product Type</b>	Primary antibodies
<b>Short Description</b>	Rabbit polyclonal antibody anti-KH domain-containing, RNA-binding, signal transduction-associated protein 1 (96-145 aa) is suitable for use in Western Blot and ELISA research applications.
<b>Applications</b>	WB/ELISA
<b>Host/Source</b>	Rabbit
<b>Reactivity</b>	Human/Mouse/Rat

### PRODUCT PROPERTIES

<b>Clonality</b>	Polyclonal
<b>Clone ID</b>	
<b>Concentration</b>	1 mg/mL
<b>Conjugation</b>	Unconjugated
<b>Purification</b>	The antibody was affinity-purified from rabbit antiserum by affinity-chromatography using epitope-specific immunogen.
<b>Dilution Range</b>	WB 1:500-1:2000 ELISA 1:10000
<b>Formulation</b>	Liquid in PBS containing 50% Glycerol, 0.5% BSA and 0.02% Sodium Azide.
<b>Isotype</b>	IgG
<b>Storage</b>	Store at -20°C for up to 1 year from the date of receipt, and avoid repeat freeze-thaw cycles.
<b>Instruction</b>	

### TARGET INFORMATION

<b>Gene ID</b>	10657
<b>Gene Symbol</b>	KHDRBS1
<b>Uniprot ID</b>	KHDR1_HUMAN
<b>Immunogen</b>	The antiserum was produced against synthesized peptide derived from the human Sam 68 at the amino acid range 96-145
<b>Immunogen Region</b>	96-145 aa
<b>Specificity</b>	Sam 68 Polyclonal Antibody detects endogenous levels of Sam 68 protein.
<b>Immunogen Sequence</b>	



Western blot analysis of lysate from HUVEC cells, using Sam 68 antibody.

Western blot analysis of various cells using Sam 68 Polyclonal Antibody

This product is suitable for in-vitro studies under the RESEARCH USE ONLY [RUO] licence. This product must not be used as for diagnostic or other medical purposes.  
St John's Laboratory Ltd, Knowledge Dock Business Centre, University Way, London, E16 2RD | Tel: 0208 223 3081