

Anti-MBTPS2 antibody (301-350 aa) (STJ95570)

STJ95570

GENERAL INFORMATION

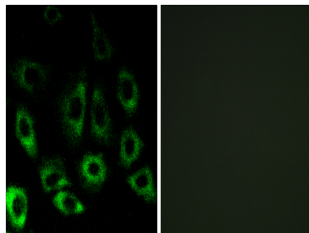
Product Type	Primary antibodies
Short Description	Rabbit polyclonal antibody anti-Membrane-bound transcription factor site-2 protease (301-350 aa) is suitable for use in Western Blot, Immunoprecipitation, Immunofluorescence and ELISA research applications.
Applications	WB/IP/IF/ELISA
Host/Source	Rabbit
Reactivity	Human/Mouse/Rat

PRODUCT PROPERTIES

Clonality	Polyclonal
Clone ID	
Concentration	1 mg/mL
Conjugation	Unconjugated
Purification	The antibody was affinity-purified from rabbit antiserum by affinity-chromatography using epitope-specific immunogen.
Dilution	WB 1:500-2000
Range	IF 1:200-1:1000 ELISA 1:20000
Formulation	Liquid in PBS containing 50% Glycerol, 0.5% BSA and 0.02% Sodium Azide.
Isotype	IgG
Storage	Store at -20°C for up to 1 year from the date of receipt, and avoid repeat freeze-thaw cycles.
Instruction	

TARGET INFORMATION

Gene ID	51360
Gene Symbol	MBTPS2
Uniprot ID	MBTP2_HUMAN
Immunogen	The antiserum was produced against synthesized peptide derived from the human MBTPS2 at the amino acid range 301-350
Immunogen Region	301-350 aa
Specificity	S2P Polyclonal Antibody detects endogenous levels of S2P protein.
Immunogen Sequence	



Immunofluorescence analysis of A549 cells, using MBTPS2 Antibody. The picture on the right is blocked with the synthesized peptide.

This product is suitable for in-vitro studies under the RESEARCH USE ONLY [RUO] licence. This product must not be used as for diagnostic or other medical purposes.
St John's Laboratory Ltd, Knowledge Dock Business Centre, University Way, London, E16 2RD | Tel: 0208 223 3081