

Anti-S100A1 antibody (10-59 aa) (STJ95562)

STJ95562

GENERAL INFORMATION

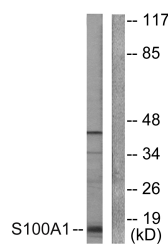
Product Type	Primary antibodies
Short Description	Rabbit polyclonal antibody anti-Protein S100-A1 (10-59 aa) is suitable for use in Western Blot, Immunohistochemistry, Immunofluorescence and ELISA research applications.
Applications	WB/IHC/IF/ELISA
Host/Source	Rabbit
Reactivity	Human/Mouse/Rat

PRODUCT PROPERTIES

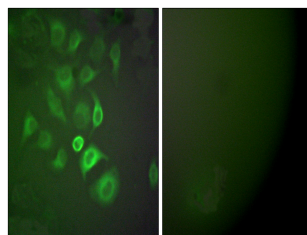
Clonality	Polyclonal
Clone ID	
Concentration	1 mg/mL
Conjugation	Unconjugated
Purification	The antibody was affinity-purified from rabbit antiserum by affinity-chromatography using epitope-specific immunogen.
Dilution Range	WB 1:500-1:2000 IHC 1:100-1:300 IF 1:200-1:1000 ELISA 1:20000
Formulation	Liquid in PBS containing 50% Glycerol, 0.5% BSA and 0.02% Sodium Azide.
Isotype	IgG
Storage	Store at -20°C for up to 1 year from the date of receipt, and avoid repeat freeze-thaw cycles.
Instruction	

TARGET INFORMATION

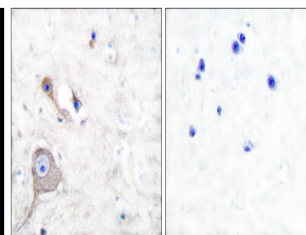
Gene ID	6271
Gene Symbol	S100A1
Uniprot ID	S10A1_HUMAN
Immunogen	The antiserum was produced against synthesized peptide derived from the human S100 A1 at the amino acid range 10-59
Immunogen Region	10-59 aa
Specificity	S-100 Alpha Polyclonal Antibody detects endogenous levels of S-100 Alpha protein.
Immunogen Sequence	



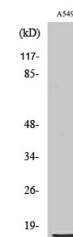
Western blot analysis of lysates from A549 cells, using S100 A1 Antibody. The lane on the right is blocked with the synthesized peptide.



Immunofluorescence analysis of A549 cells, using S100 A1 Antibody. The picture on the right is blocked with the synthesized peptide.



Immunohistochemistry analysis of paraffin-embedded human brain tissue, using S100 A1 Antibody. The picture on the right is blocked with the synthesized peptide.



Western blot analysis of various cells using S-100 Alpha Polyclonal Antibody