

Anti-RPS6KA6 antibody (661-710 aa) (STJ95550)

STJ95550

GENERAL INFORMATION

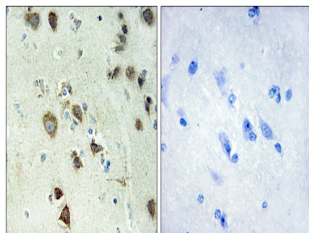
Product Type	Primary antibodies
Short Description	Rabbit polyclonal antibody anti-Ribosomal protein S6 kinase alpha-6 (661-710 aa) is suitable for use in Western Blot, Immunohistochemistry, Immunofluorescence and ELISA research applications.
Applications	WB/IHC/IF/ELISA
Host/Source	Rabbit
Reactivity	Human/Rat/Mouse

PRODUCT PROPERTIES

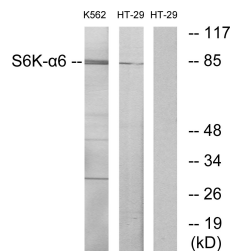
Clonality	Polyclonal
Clone ID	
Concentration	1 mg/mL
Conjugation	Unconjugated
Purification	The antibody was affinity-purified from rabbit antiserum by affinity-chromatography using epitope-specific immunogen.
Dilution Range	WB 1:500-1:2000 IHC 1:100-1:300 ELISA 1:10000 IF 1:50-200
Formulation	Liquid in PBS containing 50% Glycerol, 0.5% BSA and 0.02% Sodium Azide.
Isotype	IgG
Storage Instruction	Store at -20°C for up to 1 year from the date of receipt, and avoid repeat freeze-thaw cycles.

TARGET INFORMATION

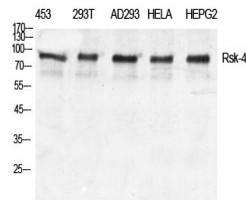
Gene ID	27330
Gene Symbol	RPS6KA6
Uniprot ID	KS6A6_HUMAN
Immunogen	The antiserum was produced against synthesized peptide derived from the human S6K-alpha6 at the amino acid range 661-710
Immunogen Region	661-710 aa
Specificity	Rsk-4 Polyclonal Antibody detects endogenous levels of Rsk-4 protein.
Immunogen Sequence	



Immunohistochemistry analysis of paraffin-embedded human brain tissue, using S6K-alpha6 Antibody. The picture on the right is blocked with the synthesized peptide.



Western blot analysis of lysates from K562 and HT-29 cells, using S6K-alpha6 Antibody. The lane on the right is blocked with the synthesized peptide.



Western blot analysis of various cells using Rsk-4 Polyclonal Antibody diluted at 1:1000.