

Anti-RSAD1 antibody (298-347 aa) (STJ95544)

STJ95544

GENERAL INFORMATION

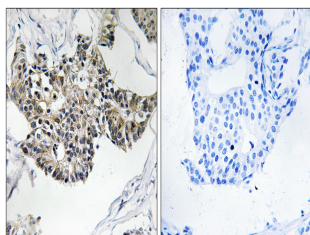
Product Type	Primary antibodies
Short Description	Rabbit polyclonal antibody anti-Radical S-adenosyl methionine domain-containing protein 1, mitochondrial (298-347 aa) is suitable for use in Western Blot, Immunohistochemistry, Immunofluorescence and ELISA research applications.
Applications	WB/IHC/IF/ELISA
Host/Source	Rabbit
Reactivity	Human/Mouse

PRODUCT PROPERTIES

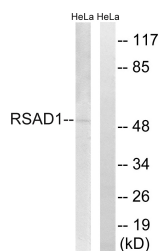
Clonality	Polyclonal
Clone ID	
Concentration	1 mg/mL
Conjugation	Unconjugated
Purification	The antibody was affinity-purified from rabbit antiserum by affinity-chromatography using epitope-specific immunogen.
Dilution	WB 1:500-1:2000
Range	IHC 1:100-1:300 ELISA 1:5000 IF 1:50-200
Formulation	Liquid in PBS containing 50% Glycerol, 0.5% BSA and 0.02% Sodium Azide.
Isotype	IgG
Storage	Store at -20°C for up to 1 year from the date of receipt, and avoid repeat freeze-thaw cycles.
Instruction	

TARGET INFORMATION

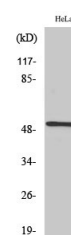
Gene ID	55316
Gene Symbol	RSAD1
Uniprot ID	RSAD1_HUMAN
Immunogen	The antiserum was produced against synthesized peptide derived from the human RSAD1 at the amino acid range 298-347
Immunogen	298-347 aa
Region	
Specificity	RSAD1 Polyclonal Antibody detects endogenous levels of RSAD1 protein.
Immunogen	
Sequence	



Immunohistochemistry analysis of paraffin-embedded human breast carcinoma tissue, using RSAD1 Antibody. The picture on the right is blocked with the synthesized peptide.



Western blot analysis of lysates from HeLa cells, using RSAD1 Antibody. The lane on the right is blocked with the synthesized peptide.



Western blot analysis of various cells using RSAD1 Polyclonal Antibody