

Anti-RPAP2 antibody (460-509 aa) (STJ95537)

STJ95537

GENERAL INFORMATION

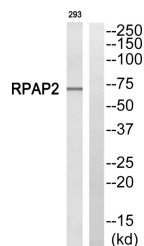
| | |
|--------------------------|---|
| Product Type | Primary antibodies |
| Short Description | Rabbit polyclonal antibody anti-Putative RNA polymerase II subunit B1 CTD phosphatase RPAP2 (460-509 aa) is suitable for use in Western Blot and ELISA research applications. |
| Applications | WB/ELISA |
| Host/Source | Rabbit |
| Reactivity | Human/Rat/Mouse |

PRODUCT PROPERTIES

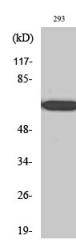
| | |
|-----------------------|---|
| Clonality | Polyclonal |
| Clone ID | |
| Concentration | 1 mg/mL |
| Conjugation | Unconjugated |
| Purification | The antibody was affinity-purified from rabbit antiserum by affinity-chromatography using epitope-specific immunogen. |
| Dilution Range | WB 1:500-1:2000 ELISA 1:10000 |
| Formulation | Liquid in PBS containing 50% Glycerol, 0.5% BSA and 0.02% Sodium Azide. |
| Isotype | IgG |
| Storage | Store at -20°C for up to 1 year from the date of receipt, and avoid repeat freeze-thaw cycles. |
| Instruction | |

TARGET INFORMATION

| | |
|---------------------------|---|
| Gene ID | 79871 |
| Gene Symbol | RPAP2 |
| Uniprot ID | RPAP2_HUMAN |
| Immunogen | The antiserum was produced against synthesized peptide derived from the human RPAP2 at the amino acid range 460-509 |
| Immunogen Region | 460-509 aa |
| Specificity | RPAP2 Polyclonal Antibody detects endogenous levels of RPAP2 protein. |
| Immunogen Sequence | |



Western blot analysis of RPAP2 Antibody. The lane on the right is blocked with the RPAP2 peptide.



Western blot analysis of various cells using RPAP2 Polyclonal Antibody

This product is suitable for in-vitro studies under the RESEARCH USE ONLY [RUO] licence. This product must not be used as for diagnostic or other medical purposes.
St John's Laboratory Ltd, Knowledge Dock Business Centre, University Way, London, E16 2RD | Tel: 0208 223 3081