

Anti-RORC antibody (71-120 aa) (STJ95532)

STJ95532

GENERAL INFORMATION

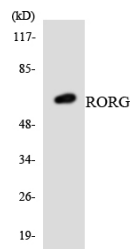
Product Type	Primary antibodies
Short Description	Rabbit polyclonal antibody anti-Nuclear receptor ROR-gamma (71-120 aa) is suitable for use in Western Blot and Immunohistochemistry research applications.
Applications	WB/IHC
Host/Source	Rabbit
Reactivity	Human/Mouse

PRODUCT PROPERTIES

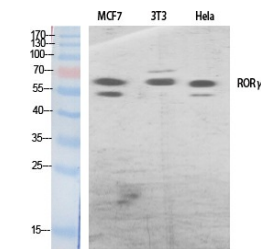
Clonality	Polyclonal
Clone ID	
Concentration	1 mg/mL
Conjugation	Unconjugated
Purification	The antibody was affinity-purified from rabbit antiserum by affinity-chromatography using epitope-specific immunogen.
Dilution Range	WB 1:500-2000 IHC-P 1:50-300
Formulation	Liquid in PBS containing 50% Glycerol, 0.5% BSA and 0.02% Sodium Azide.
Isotype	IgG
Storage	Store at -20°C for up to 1 year from the date of receipt, and avoid repeat freeze-thaw cycles.
Instruction	

TARGET INFORMATION

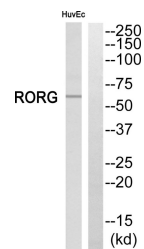
Gene ID	6097
Gene Symbol	RORC
Uniprot ID	RORC_HUMAN
Immunogen	The antiserum was produced against synthesized peptide derived from the human RORC at the amino acid range 71-120
Immunogen Region	71-120 aa
Specificity	ROR Gamma Polyclonal Antibody detects endogenous levels of ROR Gamma protein.
Immunogen Sequence	



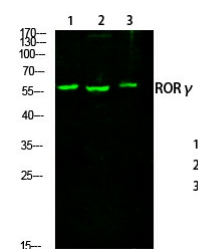
Western blot analysis of the lysates from HeLa cells using RORC antibody.



Western blot analysis of various cells using ROR Gamma Polyclonal Antibody diluted at 1/4500 cells nucleus extracted by Minute™ Cytoplasmic and Nuclear Fractionation kit (SC-003, Inventiotech, MN, USA).



Western blot analysis of RORC Antibody. The lane on the right is blocked with the RORC peptide.



Western blot analysis of various cells using primary antibody diluted at 1:1000 (4h overnight). Secondary antibody 1/2 Goat Anti-rabbit IgG IRDye 800 (diluted at 1:5000, 25A°C, 1 hour)