

Anti-RIMS4 antibody (33-82 aa) (STJ95508)

STJ95508

GENERAL INFORMATION

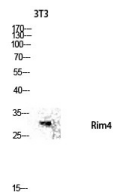
Product Type	Primary antibodies
Short Description	Rabbit polyclonal antibody anti-Regulating synaptic membrane exocytosis protein 4 (33-82 aa) is suitable for use in Western Blot, Immunohistochemistry, Immunofluorescence and ELISA research applications.
Applications	WB/IHC/IF/ELISA
Host/Source	Rabbit
Reactivity	Human/Mouse/Rat

PRODUCT PROPERTIES

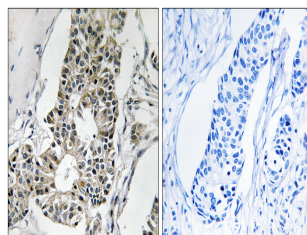
Clonality	Polyclonal
Clone ID	
Concentration	1 mg/mL
Conjugation	Unconjugated
Purification	The antibody was affinity-purified from rabbit antiserum by affinity-chromatography using epitope-specific immunogen.
Dilution	WB 1:500-1:2000
Range	IHC 1:100-1:300 ELISA 1:20000 IF 1:50-200
Formulation	Liquid in PBS containing 50% Glycerol, 0.5% BSA and 0.02% Sodium Azide.
Isotype	IgG
Storage	Store at -20°C for up to 1 year from the date of receipt, and avoid repeat freeze-thaw cycles.
Instruction	

TARGET INFORMATION

Gene ID	140730
Gene Symbol	RIMS4
Uniprot ID	RIMS4_HUMAN
Immunogen	The antiserum was produced against synthesized peptide derived from the human RIMS4 at the amino acid range 33-82
Immunogen Region	33-82 aa
Specificity	Rim4 Polyclonal Antibody detects endogenous levels of Rim4 protein.
Immunogen Sequence	



Western blot analysis of 3T3 lysis using Rim4 antibody. Antibody was diluted at 1:500



Immunohistochemistry analysis of paraffin-embedded human breast carcinoma tissue, using RIMS4 Antibody. The picture on the right is blocked with the synthesized peptide.



Western blot analysis of various cells using Rim4 Polyclonal Antibody diluted at 1:1/4 500

This product is suitable for in-vitro studies under the RESEARCH USE ONLY [RUO] licence. This product must not be used as for diagnostic or other medical purposes.
St John's Laboratory Ltd, Knowledge Dock Business Centre, University Way, London, E16 2RD | Tel: 0208 223 3081