

Anti-RPS5 antibody (60-140 aa) (STJ95502)

STJ95502

GENERAL INFORMATION

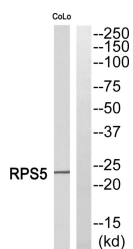
Product Type	Primary antibodies
Short Description	Rabbit polyclonal antibody anti-Small ribosomal subunit protein uS7 (60-140 aa) is suitable for use in Western Blot, ELISA and Immunohistochemistry research applications.
Applications	WB/ELISA/IHC
Host/Source	Rabbit
Reactivity	Human/Mouse/Rat

PRODUCT PROPERTIES

Clonality	Polyclonal
Clone ID	
Concentration	1 mg/mL
Conjugation	Unconjugated
Purification	The antibody was affinity-purified from rabbit antiserum by affinity-chromatography using epitope-specific immunogen.
Dilution Range	WB 1:500-2000 IHC-P 1:50-300 ELISA 2000-20000
Formulation	Liquid in PBS containing 50% Glycerol, 0.5% BSA and 0.02% Sodium Azide.
Isotype	IgG
Storage Instruction	Store at -20°C for up to 1 year from the date of receipt, and avoid repeat freeze-thaw cycles.

TARGET INFORMATION

Gene ID	6193
Gene Symbol	RPS5
Uniprot ID	RS5_HUMAN
Immunogen	Synthesized peptide derived from Ribosomal Protein S5 at the amino acid range 60-140
Immunogen Region	60-140 aa
Specificity	Ribosomal Protein S5 Polyclonal Antibody detects endogenous levels of Ribosomal Protein S5 protein.
Immunogen Sequence	



Western blot analysis of RPS5 Antibody. The lane on the right is blocked with the RPS5 peptide.

This product is suitable for in-vitro studies under the RESEARCH USE ONLY [RUO] licence. This product must not be used as for diagnostic or other medical purposes.
St John's Laboratory Ltd, Knowledge Dock Business Centre, University Way, London, E16 2RD | Tel: 0208 223 3081