

Anti-RPL3L antibody (211-260 aa) (STJ95480)

STJ95480

GENERAL INFORMATION

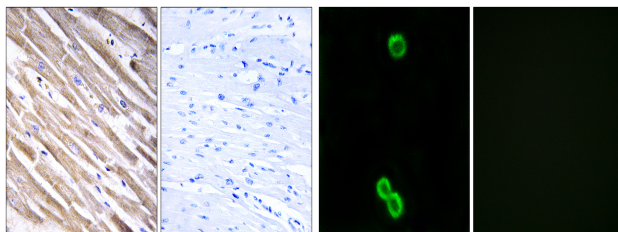
Product Type	Primary antibodies
Short Description	Rabbit polyclonal antibody anti-Ribosomal protein uL3-like (211-260 aa) is suitable for use in Immunohistochemistry, Immunofluorescence and ELISA research applications.
Applications	IHC/IF/ELISA
Host/Source	Rabbit
Reactivity	Human/Rat/Mouse

PRODUCT PROPERTIES

Clonality	Polyclonal
Clone ID	
Concentration	1 mg/mL
Conjugation	Unconjugated
Purification	The antibody was affinity-purified from rabbit antiserum by affinity-chromatography using epitope-specific immunogen.
Dilution Range	IHC 1:100-1:300 IF 1:200-1:1000 ELISA 1:40000
Formulation	Liquid in PBS containing 50% Glycerol, 0.5% BSA and 0.02% Sodium Azide.
Isotype	IgG
Storage Instruction	Store at -20°C for up to 1 year from the date of receipt, and avoid repeat freeze-thaw cycles.

TARGET INFORMATION

Gene ID	6123
Gene Symbol	RPL3L
Uniprot ID	RL3L_HUMAN
Immunogen	The antiserum was produced against synthesized peptide derived from the human RPL3L at the amino acid range 211-260
Immunogen Region	211-260 aa
Specificity	Ribosomal Protein L3L Polyclonal Antibody detects endogenous levels of Ribosomal Protein L3L protein.
Immunogen Sequence	



Immunohistochemistry analysis of paraffin-embedded human heart tissue, using RPL3L Antibody. The picture on the right is blocked with the synthesized peptide.

Immunofluorescence analysis of MCF7 cells, using RPL3L Antibody. The picture on the right is blocked with the synthesized peptide.

This product is suitable for in-vitro studies under the RESEARCH USE ONLY [RUO] licence. This product must not be used as for diagnostic or other medical purposes.
St John's Laboratory Ltd, Knowledge Dock Business Centre, University Way, London, E16 2RD | Tel: 0208 223 3081