

Anti-ARHGEF1 antibody (162-211 aa) (STJ95453)

STJ95453

GENERAL INFORMATION

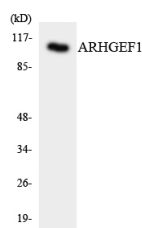
Product Type	Primary antibodies
Short Description	Rabbit polyclonal antibody anti-Rho guanine nucleotide exchange factor 1 (162-211 aa) is suitable for use in Western Blot, ELISA and Immunohistochemistry research applications.
Applications	WB/ELISA/IHC
Host/Source	Rabbit
Reactivity	Human/Mouse/Rat

PRODUCT PROPERTIES

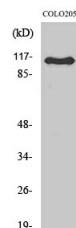
Clonality	Polyclonal
Clone ID	
Concentration	1 mg/mL
Conjugation	Unconjugated
Purification	The antibody was affinity-purified from rabbit antiserum by affinity-chromatography using epitope-specific immunogen.
Dilution Range	WB 1:500-2000 IHC-P 1:50-300 ELISA 2000-20000
Formulation	Liquid in PBS containing 50% Glycerol, 0.5% BSA and 0.02% Sodium Azide.
Isotype	IgG
Storage Instruction	Store at -20°C for up to 1 year from the date of receipt, and avoid repeat freeze-thaw cycles.

TARGET INFORMATION

Gene ID	9138
Gene Symbol	ARHGEF1
Uniprot ID	ARHG1_HUMAN
Immunogen	The antiserum was produced against synthesized peptide derived from the human ARHGEF1 at the amino acid range 162-211
Immunogen Region	162-211 aa
Specificity	RhoGEF p115 Polyclonal Antibody detects endogenous levels of RhoGEF p115 protein.
Immunogen Sequence	



Western blot analysis of the lysates from HepG2 cells using ARHGEF1 antibody.



Western blot analysis of various cells using RhoGEF p115 Polyclonal Antibody

This product is suitable for in-vitro studies under the RESEARCH USE ONLY [RUO] licence. This product must not be used as for diagnostic or other medical purposes.
St John's Laboratory Ltd, Knowledge Dock Business Centre, University Way, London, E16 2RD | Tel: 0208 223 3081