

## Anti-RhoBTB1/2 antibody (61-110 aa) (STJ95449)

STJ95449

### GENERAL INFORMATION

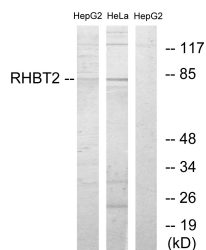
<b>Product Type</b>	Primary antibodies
<b>Short Description</b>	Rabbit polyclonal antibody anti-Rho-related BTB domain-containing protein 1 and Rho-related BTB domain-containing protein 2 (61-110 aa) is suitable for use in Western Blot, Immunohistochemistry, Immunofluorescence and ELISA research applications.
<b>Applications</b>	WB/IHC/IF/ELISA
<b>Host/Source</b>	Rabbit
<b>Reactivity</b>	Human/Mouse

### PRODUCT PROPERTIES

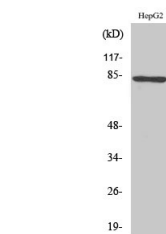
<b>Clonality</b>	Polyclonal
<b>Clone ID</b>	
<b>Concentration</b>	1 mg/mL
<b>Conjugation</b>	Unconjugated
<b>Purification</b>	The antibody was affinity-purified from rabbit antiserum by affinity-chromatography using epitope-specific immunogen.
<b>Dilution</b>	WB 1:500-1:2000
<b>Range</b>	IHC 1:100-1:300 IF 1:200-1:1000 ELISA 1:5000
<b>Formulation</b>	Liquid in PBS containing 50% Glycerol, 0.5% BSA and 0.02% Sodium Azide.
<b>Isotype</b>	IgG
<b>Storage Instruction</b>	Store at -20°C for up to 1 year from the date of receipt, and avoid repeat freeze-thaw cycles.

### TARGET INFORMATION

<b>Gene ID</b>	23221 9886
<b>Gene Symbol</b>	RHOBTB2 RHOBTB1
<b>Uniprot ID</b>	RHBT2_HUMAN RHBT1_HUMAN
<b>Immunogen</b>	The antiserum was produced against synthesized peptide derived from the human RHBT2 at the amino acid range 61-110
<b>Immunogen Region</b>	61-110 aa
<b>Specificity</b>	RhoBTB1/2 Polyclonal Antibody detects endogenous levels of RhoBTB1/2 protein.
<b>Immunogen Sequence</b>	



Western blot analysis of lysates from HepG2 and HeLa cells, using RHBT2 Antibody. The lane on the right is blocked with the synthesized peptide.



Western blot analysis of various cells using RhoBTB1/2 Polyclonal Antibody

This product is suitable for in-vitro studies under the RESEARCH USE ONLY [RUO] licence. This product must not be used as for diagnostic or other medical purposes.

St John's Laboratory Ltd, Knowledge Dock Business Centre, University Way, London, E16 2RD | Tel: 0208 223 3081