

Anti-RGS14 antibody (125-174 aa) (STJ95438)

STJ95438

GENERAL INFORMATION

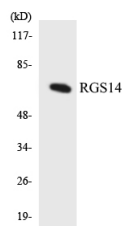
Product Type	Primary antibodies
Short Description	Rabbit polyclonal antibody anti-Regulator of G-protein signaling 14 (125-174 aa) is suitable for use in Western Blot, ELISA and Immunohistochemistry research applications.
Applications	WB/ELISA/IHC
Host/Source	Rabbit
Reactivity	Human/Mouse/Rat

PRODUCT PROPERTIES

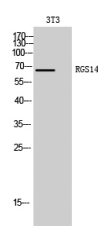
Clonality	Polyclonal
Clone ID	
Concentration	1 mg/mL
Conjugation	Unconjugated
Purification	The antibody was affinity-purified from rabbit antiserum by affinity-chromatography using epitope-specific immunogen.
Dilution Range	WB 1:500-2000 IHC-P 1:50-300 ELISA 2000-20000
Formulation	Liquid in PBS containing 50% Glycerol, 0.5% BSA and 0.02% Sodium Azide.
Isotype	IgG
Storage Instruction	Store at -20°C for up to 1 year from the date of receipt, and avoid repeat freeze-thaw cycles.

TARGET INFORMATION

Gene ID	10636
Gene Symbol	RGS14
Uniprot ID	RGS14_HUMAN
Immunogen	The antiserum was produced against synthesized peptide derived from the human RGS14 at the amino acid range 125-174
Immunogen Region	125-174 aa
Specificity	RGS14 Polyclonal Antibody detects endogenous levels of RGS14 protein.
Immunogen Sequence	



Western blot analysis of the lysates from HUVEC cells using RGS14 antibody.



Western blot analysis of 3T3 cells using RGS14 Polyclonal Antibody cells nucleus extracted by MinuteTM Cytoplasmic and Nuclear Fractionation kit (SC-003, Inventiotech, MN, USA).

This product is suitable for in-vitro studies under the RESEARCH USE ONLY [RUO] licence. This product must not be used as for diagnostic or other medical purposes.
St John's Laboratory Ltd, Knowledge Dock Business Centre, University Way, London, E16 2RD | Tel: 0208 223 3081