

Anti-RGS10 antibody (80-129 aa) (STJ95436)

STJ95436

GENERAL INFORMATION

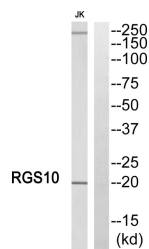
Product Type	Primary antibodies
Short Description	Rabbit polyclonal antibody anti-Regulator of G-protein signaling 10 (80-129 aa) is suitable for use in Western Blot, Immunohistochemistry, Immunofluorescence and ELISA research applications.
Applications	WB/IHC/IF/ELISA
Host/Source	Rabbit
Reactivity	Human/Mouse/Rat

PRODUCT PROPERTIES

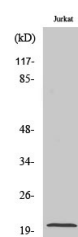
Clonality	Polyclonal
Clone ID	
Concentration	1 mg/mL
Conjugation	Unconjugated
Purification	The antibody was affinity-purified from rabbit antiserum by affinity-chromatography using epitope-specific immunogen.
Dilution Range	WB 1:500-1:2000 IHC 1:100-1:300 ELISA 1:10000 IF 1:50-200
Formulation	Liquid in PBS containing 50% Glycerol, 0.5% BSA and 0.02% Sodium Azide.
Isotype	IgG
Storage	Store at -20°C for up to 1 year from the date of receipt, and avoid repeat freeze-thaw cycles.
Instruction	

TARGET INFORMATION

Gene ID	6001
Gene Symbol	RGS10
Uniprot ID	RGS10_HUMAN
Immunogen	The antiserum was produced against synthesized peptide derived from the human RGS10 at the amino acid range 80-129
Immunogen Region	80-129 aa
Specificity	RGS10 Polyclonal Antibody detects endogenous levels of RGS10 protein.
Immunogen Sequence	



Western blot analysis of RGS10 Antibody. The lane on the right is blocked with the RGS10 peptide.



Western blot analysis of various cells using RGS10 Polyclonal Antibody.