

## Anti-REXO1 antibody (185-234 aa) (STJ95424)

STJ95424

### GENERAL INFORMATION

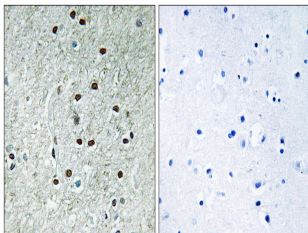
|                          |   |
|--------------------------|---|
| <b>Product Type</b>      | Primary antibodies  |
| <b>Short Description</b> | Rabbit polyclonal antibody anti-RNA exonuclease 1 homolog (185-234 aa) is suitable for use in Immunohistochemistry, Immunofluorescence and ELISA research applications. |
| <b>Applications</b>      | IHC/IF/ELISA  |
| <b>Host/Source</b>       | Rabbit  |
| <b>Reactivity</b>        | Human/Rat/Mouse   |

### PRODUCT PROPERTIES

|                            |   |
|----------------------------|---|
| <b>Clonality</b>           | Polyclonal  |
| <b>Clone ID</b>            |   |
| <b>Concentration</b>       | 1 mg/mL   |
| <b>Conjugation</b>         | Unconjugated  |
| <b>Purification</b>        | The antibody was affinity-purified from rabbit antiserum by affinity-chromatography using epitope-specific immunogen. |
| <b>Dilution Range</b>      | IHC 1:100-1:300<br>ELISA 1:20000<br>IF 1:50-200   |
| <b>Formulation</b>         | Liquid in PBS containing 50% Glycerol, 0.5% BSA and 0.02% Sodium Azide.   |
| <b>Isotype</b>             | IgG   |
| <b>Storage Instruction</b> | Store at -20°C for up to 1 year from the date of receipt, and avoid repeat freeze-thaw cycles.                        |

### TARGET INFORMATION

|                           |   |
|---------------------------|---|
| <b>Gene ID</b>            | 57455   |
| <b>Gene Symbol</b>        | REXO1   |
| <b>Uniprot ID</b>         | REXO1_HUMAN   |
| <b>Immunogen Region</b>   | The antiserum was produced against synthesized peptide derived from the human REXO1 at the amino acid range 185-234 |
| <b>Specificity</b>        | REXO1 Polyclonal Antibody detects endogenous levels of REXO1 protein.   |
| <b>Immunogen Sequence</b> |   |



Immunohistochemistry analysis of paraffin-embedded human brain, using REXO1 Antibody. The picture on the right is blocked with the synthesized peptide.