

## Anti-REN antibody (207-256 aa) (STJ95412)

STJ95412

### GENERAL INFORMATION

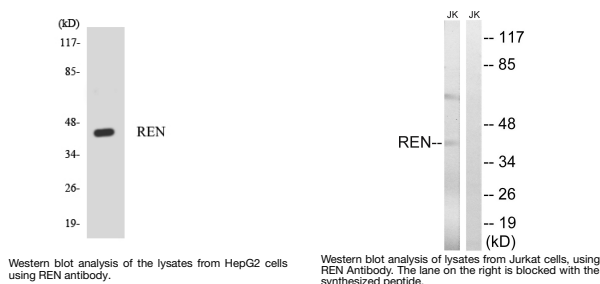
|                          |                                                                                                                                                                   |
|--------------------------|-------------------------------------------------------------------------------------------------------------------------------------------------------------------|
| <b>Product Type</b>      | Primary antibodies                                                                                                                                                |
| <b>Short Description</b> | Rabbit polyclonal antibody anti-Renin (207-256 aa) is suitable for use in Western Blot, Immunohistochemistry, Immunofluorescence and ELISA research applications. |
| <b>Applications</b>      | WB/IHC/IF/ELISA                                                                                                                                                   |
| <b>Host/Source</b>       | Rabbit                                                                                                                                                            |
| <b>Reactivity</b>        | Human/Rat/Mouse                                                                                                                                                   |

### PRODUCT PROPERTIES

|                            |                                                                                                                       |
|----------------------------|-----------------------------------------------------------------------------------------------------------------------|
| <b>Clonality</b>           | Polyclonal                                                                                                            |
| <b>Clone ID</b>            |                                                                                                                       |
| <b>Concentration</b>       | 1 mg/mL                                                                                                               |
| <b>Conjugation</b>         | Unconjugated                                                                                                          |
| <b>Purification</b>        | The antibody was affinity-purified from rabbit antiserum by affinity-chromatography using epitope-specific immunogen. |
| <b>Dilution Range</b>      | WB 1:500-1:2000<br>IHC 1:100-1:300<br>ELISA 1:20000<br>IF 1:50-200                                                    |
| <b>Formulation</b>         | Liquid in PBS containing 50% Glycerol, 0.5% BSA and 0.02% Sodium Azide.                                               |
| <b>Isotype</b>             | IgG                                                                                                                   |
| <b>Storage Instruction</b> | Store at -20°C for up to 1 year from the date of receipt, and avoid repeat freeze-thaw cycles.                        |

### TARGET INFORMATION

|                           |                                                                                                                   |
|---------------------------|-------------------------------------------------------------------------------------------------------------------|
| <b>Gene ID</b>            | 5972                                                                                                              |
| <b>Gene Symbol</b>        | REN                                                                                                               |
| <b>Uniprot ID</b>         | REN_HUMAN                                                                                                         |
| <b>Immunogen</b>          | The antiserum was produced against synthesized peptide derived from the human REN at the amino acid range 207-256 |
| <b>Immunogen Region</b>   | 207-256 aa                                                                                                        |
| <b>Specificity</b>        | Renin Polyclonal Antibody detects endogenous levels of Renin protein.                                             |
| <b>Immunogen Sequence</b> |                                                                                                                   |



This product is suitable for in-vitro studies under the RESEARCH USE ONLY [RUO] licence. This product must not be used as for diagnostic or other medical purposes.  
St John's Laboratory Ltd, Knowledge Dock Business Centre, University Way, London, E16 2RD | Tel: 0208 223 3081