

Anti-RELB antibody (530-579 aa) (STJ95410)

STJ95410

GENERAL INFORMATION

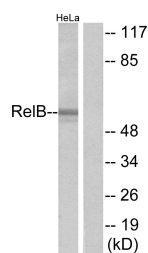
Product Type	Primary antibodies
Short Description	Rabbit polyclonal antibody anti-Transcription factor RelB (530-579 aa) is suitable for use in Western Blot, ELISA and Immunohistochemistry research applications.
Applications	WB/ELISA/IHC
Host/Source	Rabbit
Reactivity	Human/Mouse

PRODUCT PROPERTIES

Clonality	Polyclonal
Clone ID	
Concentration	1 mg/mL
Conjugation	Unconjugated
Purification	The antibody was affinity-purified from rabbit antiserum by affinity-chromatography using epitope-specific immunogen.
Dilution Range	WB 1:500-2000 IHC-P 1:50-300 ELISA 2000-20000
Formulation	Liquid in PBS containing 50% Glycerol, 0.5% BSA and 0.02% Sodium Azide.
Isotype	IgG
Storage Instruction	Store at -20°C for up to 1 year from the date of receipt, and avoid repeat freeze-thaw cycles.

TARGET INFORMATION

Gene ID	5971
Gene Symbol	RELB
Uniprot ID	RELB_HUMAN
Immunogen	The antiserum was produced against synthesized peptide derived from the human RelB at the amino acid range 530-579
Immunogen Region	530-579 aa
Specificity	RelB Polyclonal Antibody detects endogenous levels of RelB protein.
Immunogen Sequence	



Western blot analysis of lysates from HeLa cells, using RelB Antibody. The lane on the right is blocked with the synthesized peptide.