

Anti-CDH4 antibody (731-780 aa) (STJ95395)

STJ95395

GENERAL INFORMATION

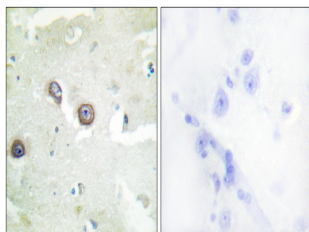
Product Type	Primary antibodies
Short Description	Rabbit polyclonal antibody anti-Cadherin-4 (731-780 aa) is suitable for use in Immunohistochemistry, Immunofluorescence and ELISA research applications.
Applications	IHC/IF/ELISA
Host/Source	Rabbit
Reactivity	Human/Mouse

PRODUCT PROPERTIES

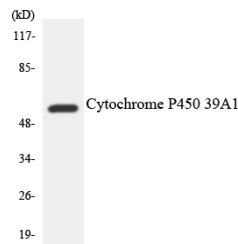
Clonality	Polyclonal
Clone ID	
Concentration	1 mg/mL
Conjugation	Unconjugated
Purification	The antibody was affinity-purified from rabbit antiserum by affinity-chromatography using epitope-specific immunogen.
Dilution Range	IHC 1:100-1:300 IF 1:200-1:1000 ELISA 1:5000
Formulation	Liquid in PBS containing 50% Glycerol, 0.5% BSA and 0.02% Sodium Azide.
Isotype	IgG
Storage Instruction	Store at -20°C for up to 1 year from the date of receipt, and avoid repeat freeze-thaw cycles.

TARGET INFORMATION

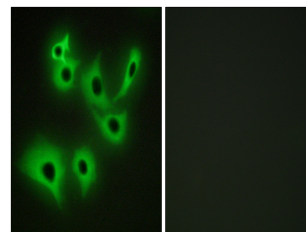
Gene ID	1002
Gene Symbol	CDH4
Uniprot ID	CADH4_HUMAN
Immunogen	The antiserum was produced against synthesized peptide derived from the human CDH4 at the amino acid range 731-780
Immunogen Region	731-780 aa
Specificity	R-cadherin Polyclonal Antibody detects endogenous levels of R-cadherin protein.
Immunogen Sequence	



Immunohistochemistry analysis of paraffin-embedded human brain tissue, using CDH4 Antibody. The picture on the right is blocked with the synthesized peptide.



Western blot analysis of the lysates from COLO205 cells using Cytochrome P450 2D6 antibody.



Immunofluorescence analysis of A549 cells, using CDH4 Antibody. The picture on the right is blocked with the synthesized peptide.

This product is suitable for in-vitro studies under the RESEARCH USE ONLY [RUO] licence. This product must not be used as for diagnostic or other medical purposes.
St John's Laboratory Ltd, Knowledge Dock Business Centre, University Way, London, E16 2RD | Tel: 0208 223 3081