

Anti-RASSF6 antibody (129-178 aa) (STJ95378)

STJ95378

GENERAL INFORMATION

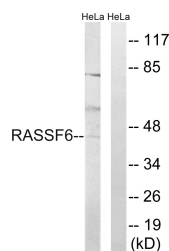
Product Type	Primary antibodies
Short Description	Rabbit polyclonal antibody anti-Ras association domain-containing protein 6 (129-178 aa) is suitable for use in Western Blot and ELISA research applications.
Applications	WB/ELISA
Host/Source	Rabbit
Reactivity	Human/Rat/Mouse

PRODUCT PROPERTIES

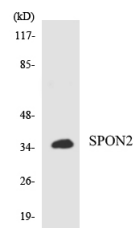
Clonality	Polyclonal
Clone ID	
Concentration	1 mg/mL
Conjugation	Unconjugated
Purification	The antibody was affinity-purified from rabbit antiserum by affinity-chromatography using epitope-specific immunogen.
Dilution Range	WB 1:500-1:2000 ELISA 1:10000
Formulation	Liquid in PBS containing 50% Glycerol, 0.5% BSA and 0.02% Sodium Azide.
Isotype	IgG
Storage	Store at -20°C for up to 1 year from the date of receipt, and avoid repeat freeze-thaw cycles.
Instruction	

TARGET INFORMATION

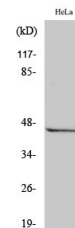
Gene ID	166824
Gene Symbol	RASSF6
Uniprot ID	RASF6_HUMAN
Immunogen	The antiserum was produced against synthesized peptide derived from the human RASSF6 at the amino acid range 129-178
Immunogen Region	129-178 aa
Specificity	RASSF6 Polyclonal Antibody detects endogenous levels of RASSF6 protein.
Immunogen Sequence	



Western blot analysis of lysates from HeLa cells, using RASSF6 Antibody. The lane on the right is blocked with the synthesized peptide.



Western blot analysis of the lysates from K562 cells using RASSF6 antibody.



Western blot analysis of various cells using RASSF6 Polyclonal Antibody.

This product is suitable for in-vitro studies under the RESEARCH USE ONLY [RUO] licence. This product must not be used as for diagnostic or other medical purposes.
St John's Laboratory Ltd, Knowledge Dock Business Centre, University Way, London, E16 2RD | Tel: 0208 223 3081