

**Anti-Rag A/B antibody (264-313 aa) (STJ95355)**  
STJ95355

**GENERAL INFORMATION**

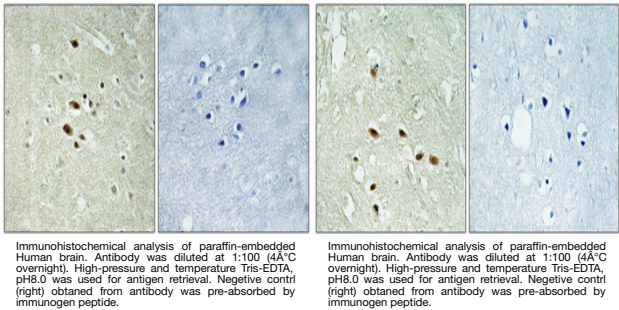
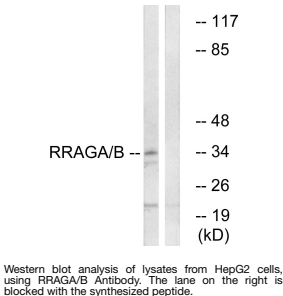
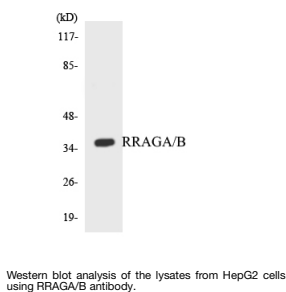
<b>Product Type</b>	Primary antibodies
<b>Short Description</b>	Rabbit polyclonal antibody anti-Ras-related GTP-binding protein A and Ras-related GTP-binding protein B (264-313 aa) is suitable for use in Western Blot, Immunohistochemistry, Immunofluorescence and ELISA research applications.
<b>Applications</b>	WB/IHC/IF/ELISA
<b>Host/Source</b>	Rabbit
<b>Reactivity</b>	Human/Mouse/Rat

**PRODUCT PROPERTIES**

<b>Clonality</b>	Polyclonal
<b>Clone ID</b>	
<b>Concentration</b>	1 mg/mL
<b>Conjugation</b>	Unconjugated
<b>Purification</b>	The antibody was affinity-purified from rabbit antiserum by affinity-chromatography using epitope-specific immunogen.
<b>Dilution</b>	WB 1:500-1:2000
<b>Range</b>	IHC 1:100-1:300 ELISA 1:20000 IF 1:50-200
<b>Formulation</b>	Liquid in PBS containing 50% Glycerol, 0.5% BSA and 0.02% Sodium Azide.
<b>Isotype</b>	IgG
<b>Storage Instruction</b>	Store at -20°C for up to 1 year from the date of receipt, and avoid repeat freeze-thaw cycles.

**TARGET INFORMATION**

<b>Gene ID</b>	<a href="#">10325</a> <a href="#">10670</a>
<b>Gene Symbol</b>	<a href="#">RRAGB</a> <a href="#">RRAGA</a>
<b>Uniprot ID</b>	<a href="#">RRAGB_HUMAN</a> <a href="#">RRAGA_HUMAN</a>
<b>Immunogen</b>	The antiserum was produced against synthesized peptide derived from the human RRAGA/B at the amino acid range 264-313
<b>Immunogen Region</b>	264-313 aa
<b>Specificity</b>	Rag A/B Polyclonal Antibody detects endogenous levels of Rag A/B protein.
<b>Immunogen Sequence</b>	



This product is suitable for in-vitro studies under the RESEARCH USE ONLY [RUO] licence. This product must not be used as for diagnostic or other medical purposes.  
St John's Laboratory Ltd, Knowledge Dock Business Centre, University Way, London, E16 2RD | Tel: 0208 223 3081