

Anti-RFTN1 antibody (432-481 aa) (STJ95354)

STJ95354

GENERAL INFORMATION

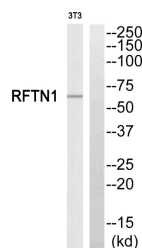
Product Type	Primary antibodies
Short Description	Rabbit polyclonal antibody anti-Raftlin (432-481 aa) is suitable for use in Western Blot and Immunohistochemistry research applications.
Applications	WB/IHC
Host/Source	Rabbit
Reactivity	Human/Rat/Mouse

PRODUCT PROPERTIES

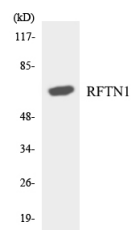
Clonality	Polyclonal
Clone ID	
Concentration	1 mg/mL
Conjugation	Unconjugated
Purification	The antibody was affinity-purified from rabbit antiserum by affinity-chromatography using epitope-specific immunogen.
Dilution Range	WB 1:500-2000 IHC-P 1:50-300
Formulation	Liquid in PBS containing 50% Glycerol, 0.5% BSA and 0.02% Sodium Azide.
Isotype	IgG
Storage Instruction	Store at -20°C for up to 1 year from the date of receipt, and avoid repeat freeze-thaw cycles.

TARGET INFORMATION

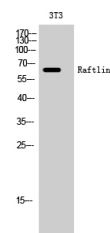
Gene ID	23180
Gene Symbol	RFTN1
Uniprot ID	RFTN1_HUMAN
Immunogen	The antiserum was produced against synthesized peptide derived from the human RFTN1 at the amino acid range 432-481
Immunogen Region	432-481 aa
Specificity	Raftlin Polyclonal Antibody detects endogenous levels of Raftlin protein.
Immunogen Sequence	



Western blot analysis of RFTN1 Antibody. The lane on the right is blocked with the RFTN1 peptide.



Western blot analysis of the lysates from RAW264.7 cells using RFTN1 antibody.



Western blot analysis of 3T3 cells using Raftlin Polyclonal Antibody.

This product is suitable for in-vitro studies under the RESEARCH USE ONLY [RUO] licence. This product must not be used as for diagnostic or other medical purposes.
St John's Laboratory Ltd, Knowledge Dock Business Centre, University Way, London, E16 2RD | Tel: 0208 223 3081