

## Anti-RAD54L antibody (221-270 aa) (STJ95335)

STJ95335

### GENERAL INFORMATION

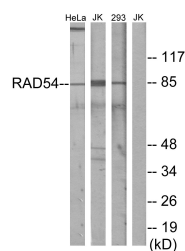
<b>Product Type</b>	Primary antibodies
<b>Short Description</b>	Rabbit polyclonal antibody anti-DNA repair and recombination protein RAD54-like (221-270 aa) is suitable for use in Western Blot, Immunohistochemistry, Immunofluorescence and ELISA research applications.
<b>Applications</b>	WB/IHC/IF/ELISA
<b>Host/Source</b>	Rabbit
<b>Reactivity</b>	Human/Mouse

### PRODUCT PROPERTIES

<b>Clonality</b>	Polyclonal
<b>Clone ID</b>	
<b>Concentration</b>	1 mg/mL
<b>Conjugation</b>	Unconjugated
<b>Purification</b>	The antibody was affinity-purified from rabbit antiserum by affinity-chromatography using epitope-specific immunogen.
<b>Dilution</b>	WB 1:500-1:2000
<b>Range</b>	IHC 1:100-1:300 IF 1:200-1:1000 ELISA 1:5000
<b>Formulation</b>	Liquid in PBS containing 50% Glycerol, 0.5% BSA and 0.02% Sodium Azide.
<b>Isotype</b>	IgG
<b>Storage</b>	Store at -20°C for up to 1 year from the date of receipt, and avoid repeat freeze-thaw cycles.
<b>Instruction</b>	

### TARGET INFORMATION

<b>Gene ID</b>	8438
<b>Gene Symbol</b>	RAD54L
<b>Uniprot ID</b>	RAD54_HUMAN
<b>Immunogen</b>	The antiserum was produced against synthesized peptide derived from the human RAD54L at the amino acid range 221-270
<b>Immunogen</b>	221-270 aa
<b>Region</b>	
<b>Specificity</b>	Rad54 Polyclonal Antibody detects endogenous levels of Rad54 protein.
<b>Immunogen</b>	
<b>Sequence</b>	



Western blot analysis of lysates from HeLa cells, Jurkat cells, and 293 cells, using RAD54 Antibody. The lane on the right is blocked with the synthesized peptide.