

Anti-RAD50 antibody (681-730 aa) (STJ95328)

STJ95328

GENERAL INFORMATION

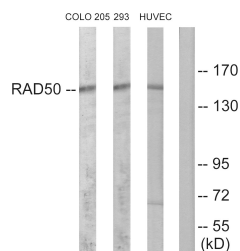
Product Type	Primary antibodies
Short Description	Rabbit polyclonal antibody anti-DNA repair protein RAD50 (681-730 aa) is suitable for use in Western Blot, Immunohistochemistry, Immunofluorescence and ELISA research applications.
Applications	WB/IHC/IF/ELISA
Host/Source	Rabbit
Reactivity	Human/Mouse/Rat

PRODUCT PROPERTIES

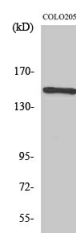
Clonality	Polyclonal
Clone ID	
Concentration	1 mg/mL
Conjugation	Unconjugated
Purification	The antibody was affinity-purified from rabbit antiserum by affinity-chromatography using epitope-specific immunogen.
Dilution Range	WB 1:500-1:2000 IHC 1:100-1:300 ELISA 1:20000 IF 1:50-200
Formulation	Liquid in PBS containing 50% Glycerol, 0.5% BSA and 0.02% Sodium Azide.
Isotype	IgG
Storage Instruction	Store at -20°C for up to 1 year from the date of receipt, and avoid repeat freeze-thaw cycles.

TARGET INFORMATION

Gene ID	10111
Gene Symbol	RAD50
Uniprot ID	RAD50_HUMAN
Immunogen	The antiserum was produced against synthesized peptide derived from the human RAD50 at the amino acid range 681-730
Immunogen Region	681-730 aa
Specificity	Rad50 Polyclonal Antibody detects endogenous levels of Rad50 protein.
Immunogen Sequence	



Western blot analysis of lysates from COLO205, 293, and HUVEC cells, using RAD50 Antibody. The lane on the right is blocked with the synthesized peptide.



Western blot analysis of various cells using Rad50 Polyclonal Antibody diluted at 1/1000 cells nucleus extracted by Minute TM Cytoplasmic and Nuclear Fractionation kit (SC-003, Inventibiotec, MN, USA).