

Anti-RAD21 antibody (521-570 aa) (STJ95325)

STJ95325

GENERAL INFORMATION

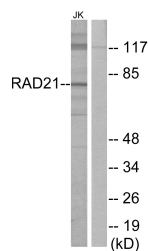
Product Type	Primary antibodies
Short Description	Rabbit polyclonal antibody anti-Double-strand-break repair protein rad21 homolog (521-570 aa) is suitable for use in Western Blot, Immunohistochemistry, Immunofluorescence and ELISA research applications.
Applications	WB/IHC/IF/ELISA
Host/Source	Rabbit
Reactivity	Human/Mouse

PRODUCT PROPERTIES

Clonality	Polyclonal
Clone ID	
Concentration	1 mg/mL
Conjugation	Unconjugated
Purification	The antibody was affinity-purified from rabbit antiserum by affinity-chromatography using epitope-specific immunogen.
Dilution Range	WB 1:500-1:2000 IHC 1:100-1:300 IF 1:200-1:1000 ELISA 1:5000
Formulation	Liquid in PBS containing 50% Glycerol, 0.5% BSA and 0.02% Sodium Azide.
Isotype	IgG
Storage Instruction	Store at -20°C for up to 1 year from the date of receipt, and avoid repeat freeze-thaw cycles.

TARGET INFORMATION

Gene ID	5885
Gene Symbol	RAD21
Uniprot ID	RAD21_HUMAN
Immunogen	The antiserum was produced against synthesized peptide derived from the human RAD21 at the amino acid range 521-570
Immunogen Region	521-570 aa
Specificity	Rad21 Polyclonal Antibody detects endogenous levels of Rad21 protein.
Immunogen Sequence	



Western blot analysis of lysates from Jurkat cells, using RAD21 Antibody. The lane on the right is blocked with the synthesized peptide.